

## SHIP1 antibody [GT1287]

Cat. No. GTX03199

Host	Rabbit
Clonality	Monoclonal
Isotype	IgG
Applications	WB, ICC/IF, IHC-P, IP
Reactivity	Human, Mouse, Rat

★★★★★ Review ( 3 )

Package  
100 µl

## Applications

## Application Note

\*Optimal dilutions/concentrations should be determined by the researcher.

Suggested dilution	Recommended dilution
WB	1:500 - 1:2000
ICC/IF	1:50 - 1:200
IHC-P	1:50 - 1:200
IP	Assay dependent

Not tested in other applications.

Calculated MW	133 kDa. ( <a href="#">Note</a> )
Observed MW (kDa)	145 kDa. The observed M.W. is based on the following publication. PMID: 32679836, 20147977

## Properties

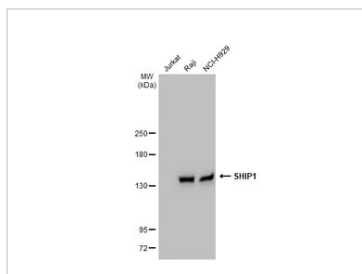
Form	Liquid
Buffer	PBS, 0.05% BSA, 50% Glycerol
Preservative	0.02% Sodium azide
Storage	Store as concentrated solution. Centrifuge briefly prior to opening vial. For short-term storage (1-2 weeks), store at 4°C. For long-term storage, aliquot and store at -20°C or below. Avoid multiple freeze-thaw cycles.
Concentration	0.79 mg/ml (Please refer to the vial label for the specific concentration.)
Immunogen	A synthesized peptide derived from human SHIP.
Purification	Purified by affinity chromatography
Conjugation	Unconjugated

For full product information, images and publications, please visit our [website](#).

For laboratory research use only. Not for any clinical, therapeutic, or diagnostic use in humans or animals. Not for animal or human consumption.

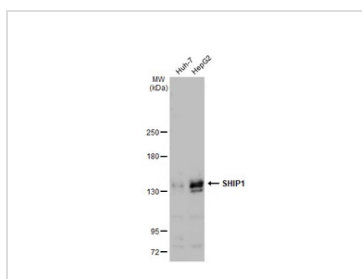
**Note**

Purchasers shall not, and agree not to enable third parties to, analyze, copy, reverse engineer or otherwise attempt to determine the structure or sequence of the product.

**DATA IMAGES**

**GTX03199 WB Image**

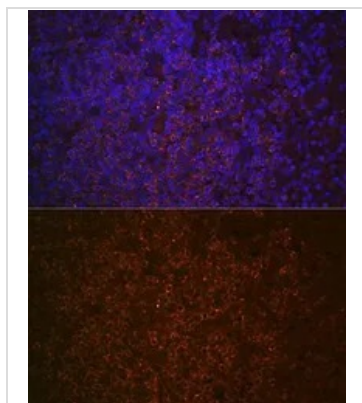
Various whole cell extracts (30 µg) were separated by 5% SDS-PAGE, and the membrane was blotted with SHIP1 antibody [GT1287] (GTX03199) diluted at 1:1000. The HRP-conjugated anti-rabbit IgG antibody (GTX213110-01) was used to detect the primary antibody.

The observed M.W. is based on the publication: PMID: 32679836, and PMID:20147977


**GTX03199 WB Image**

Various whole cell extracts (30 µg) were separated by 5% SDS-PAGE, and the membrane was blotted with SHIP1 antibody [GT1287] (GTX03199) diluted at 1:1000. The HRP-conjugated anti-rabbit IgG antibody (GTX213110-01) was used to detect the primary antibody.

The observed M.W. is based on the publication: PMID: 32679836, and PMID:20147977


**GTX03199 IHC-P Image**

IHC-P analysis of human spleen tissue section using GTX03199 SHIP1 antibody [GT1287].

Blue : DAPI for nuclear staining

Dilution : 1:100



For full product information, images and publications, please visit our [website](https://www.genetex.com).