

## MLCK antibody [GT1296]

**Cat. No. GTX03208**

<b>Host</b>	Rabbit
<b>Clonality</b>	Monoclonal
<b>Isotype</b>	IgG
<b>Applications</b>	WB
<b>Reactivity</b>	Human, Mouse, Rat

**Package**  
100 µl

## Applications

**Application Note**

\*Optimal dilutions/concentrations should be determined by the researcher.

Suggested dilution	Recommended dilution
WB	1:500 - 1:2000

Not tested in other applications.

<b>Calculated MW</b>	211 kDa. ( <a href="#">Note</a> )
<b>Observed MW (kDa)</b>	130 kDa. The observed M.W. is based on the following publication. PMID: 24151072

## Properties

<b>Form</b>	Liquid
<b>Buffer</b>	PBS, 0.05% BSA, 50% Glycerol
<b>Preservative</b>	0.02% Sodium azide
<b>Storage</b>	Store as concentrated solution. Centrifuge briefly prior to opening vial. For short-term storage (1-2 weeks), store at 4°C. For long-term storage, aliquot and store at -20°C or below. Avoid multiple freeze-thaw cycles.
<b>Concentration</b>	0.65 mg/ml (Please refer to the vial label for the specific concentration.)
<b>Immunogen</b>	A synthesized peptide derived from human Myosin light chain kinase.
<b>Purification</b>	Purified by affinity chromatography
<b>Conjugation</b>	Unconjugated

**Note**

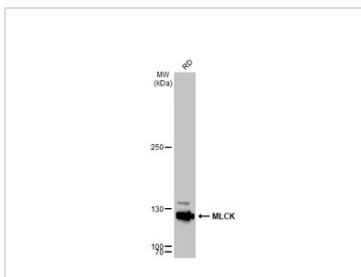
For laboratory research use only. Not for any clinical, therapeutic, or diagnostic use in humans or animals. Not for animal or human consumption.

Purchasers shall not, and agree not to enable third parties to, analyze, copy, reverse engineer or otherwise attempt to determine the structure or sequence of the product.



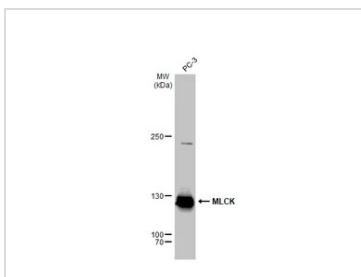
For full product information, images and publications, please visit our [website](#).

DATA IMAGES



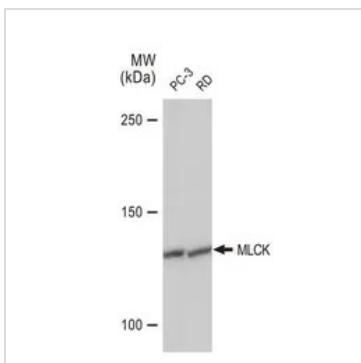
**GTX03208 WB Image**

Whole cell extract (30 µg) was separated by 5% SDS-PAGE, and the membrane was blotted with MLCK antibody [GT1296] (GTX03208) diluted at 1:1000. The HRP-conjugated anti-rabbit IgG antibody (GTX213110-01) was used to detect the primary antibody.  
The observed M.W. is based on the publication: PMID: 24151072



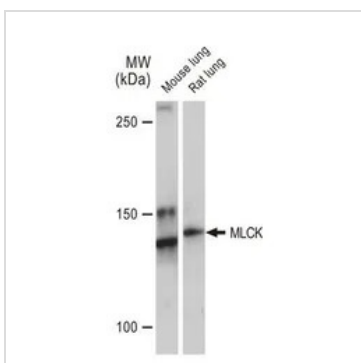
**GTX03208 WB Image**

Whole cell extract (30 µg) was separated by 5% SDS-PAGE, and the membrane was blotted with MLCK antibody [GT1296] (GTX03208) diluted at 1:1000. The HRP-conjugated anti-rabbit IgG antibody (GTX213110-01) was used to detect the primary antibody.  
The observed M.W. is based on the publication: PMID: 24151072



**GTX03208 WB Image**

WB analysis of various samples using GTX03208 MLCK antibody [GT1296].  
Dilution : 1:1000  
Loading : 25µg per lane



**GTX03208 WB Image**

WB analysis of various samples using GTX03208 MLCK antibody [GT1296].  
Dilution : 1:1000  
Loading : 25µg per lane



For full product information, images and publications, please visit our [website](#).