

IKB alpha (phospho Ser36) antibody [GT1298]

Cat. No. GTX03210

Host	Rabbit
Clonality	Monoclonal
Isotype	IgG
Applications	WB, IHC-P
Reactivity	Human, Mouse, Rat

References (1)

Package

100 µl

Applications

Application Note

*Optimal dilutions/concentrations should be determined by the researcher.

Suggested dilution	Recommended dilution
WB	1:500 - 1:2000
IHC-P	1:50 - 1:200

Not tested in other applications.

Calculated MW 36 kDa. ([Note](#))

Properties

Form	Liquid
Buffer	PBS, 0.05% BSA, 50% Glycerol
Preservative	0.02% Sodium azide
Storage	Store as concentrated solution. Centrifuge briefly prior to opening vial. For short-term storage (1-2 weeks), store at 4°C. For long-term storage, aliquot and store at -20°C or below. Avoid multiple freeze-thaw cycles.
Concentration	0.39 mg/ml (Please refer to the vial label for the specific concentration.)
Immunogen	A phospho specific peptide corresponding to residues surrounding S36 of human IκBα.
Purification	Purified by affinity chromatography
Conjugation	Unconjugated

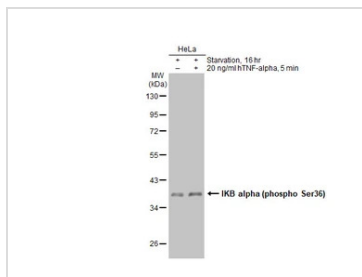
Note

For laboratory research use only. Not for any clinical, therapeutic, or diagnostic use in humans or animals. Not for animal or human consumption.

Purchasers shall not, and agree not to enable third parties to, analyze, copy, reverse engineer or otherwise attempt to determine the structure or sequence of the product.

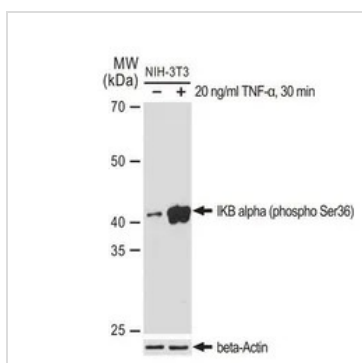
For full product information, images and publications, please visit our [website](#).

DATA IMAGES



GTX03210 WB Image

Untreated (-) and treated (+) HeLa whole cell extracts (30 µg) were separated by 10% SDS-PAGE, and the membrane was blotted with IKB alpha (phospho Ser36) antibody [GT1298] (GTX03210) diluted at 1:500. The HRP-conjugated anti-rabbit IgG antibody (GTX213110-01) was used to detect the primary antibody.

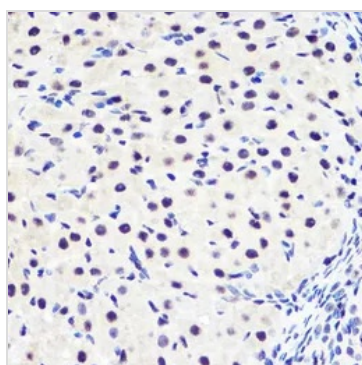


GTX03210 WB Image

WB analysis of NIH-3T3 cells were treated by TNF-α (20 ng/mL) at 37°C for 30 minutes using GTX03210 IKB alpha (phospho Ser36) antibody [GT1298].

Dilution : 1:1000

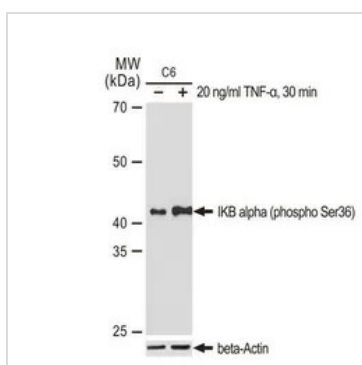
Loading : 25µg per lane



GTX03210 IHC-P Image

IHC-P analysis of rat ovary tissue section using GTX03210 IKB alpha (phospho Ser36) antibody [GT1298].

Dilution : 1:100



GTX03210 WB Image

WB analysis of C6 cells were treated by TNF-α (20 ng/mL) at 37°C for 30 minutes using GTX03210 IKB alpha (phospho Ser36) antibody [GT1298].

Dilution : 1:1000

Loading : 25µg per lane



For full product information, images and publications, please visit our [website](#).