

Oncostatin M antibody [GT1300]

Cat. No. GTX03212

Host	Rabbit
Clonality	Monoclonal
Isotype	IgG
Applications	WB, ICC/IF, IHC-P
Reactivity	Human, Mouse, Rat

Package
100 µl

Applications

Application Note

*Optimal dilutions/concentrations should be determined by the researcher.

Suggested dilution	Recommended dilution
WB	1:500 - 1:2000
ICC/IF	1:50 - 1:200
IHC-P	Assay dependent

Not tested in other applications.

Calculated MW 28 kDa. ([Note](#))

Properties

Form	Liquid
Buffer	PBS, 0.05% BSA, 50% Glycerol
Preservative	0.02% Sodium azide
Storage	Store as concentrated solution. Centrifuge briefly prior to opening vial. For short-term storage (1-2 weeks), store at 4°C. For long-term storage, aliquot and store at -20°C or below. Avoid multiple freeze-thaw cycles.
Concentration	0.4 mg/ml (Please refer to the vial label for the specific concentration.)
Immunogen	A synthesized peptide derived from human Oncostatin M.
Purification	Purified by affinity chromatography
Conjugation	Unconjugated

Note

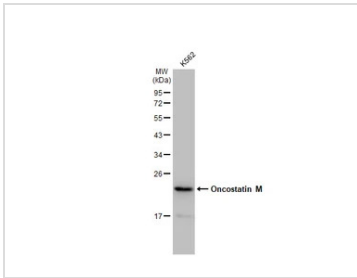
For laboratory research use only. Not for any clinical, therapeutic, or diagnostic use in humans or animals. Not for animal or human consumption.

Purchasers shall not, and agree not to enable third parties to, analyze, copy, reverse engineer or otherwise attempt to determine the structure or sequence of the product.



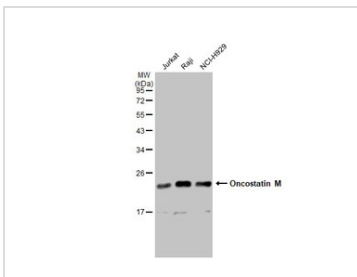
For full product information, images and publications, please visit our [website](#).

DATA IMAGES



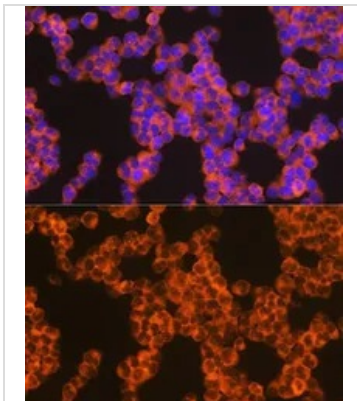
GTX03212 WB Image

Whole cell extract (30 µg) was separated by 12% SDS-PAGE, and the membrane was blotted with Oncostatin M antibody [GT1300] (GTX03212) diluted at 1:1000. The HRP-conjugated anti-rabbit IgG antibody (GTX213110-01) was used to detect the primary antibody.



GTX03212 WB Image

Various whole cell extracts (30 µg) were separated by 12% SDS-PAGE, and the membrane was blotted with Oncostatin M antibody [GT1300] (GTX03212) diluted at 1:1000. The HRP-conjugated anti-rabbit IgG antibody (GTX213110-01) was used to detect the primary antibody.

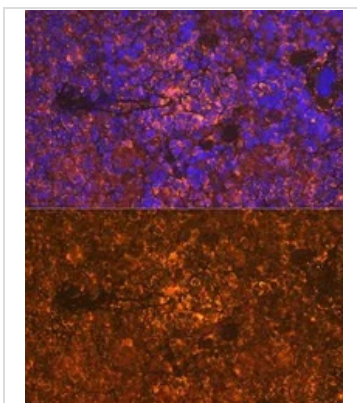


GTX03212 ICC/IF Image

ICC/IF analysis of Jurkat cells using GTX03212 Oncostatin M antibody [GT1300].

Blue : DAPI for nuclear staining

Dilution : 1:100



GTX03212 IHC-P Image

IHC-P analysis of rat spleen tissue section using GTX03212 Oncostatin M antibody [GT1300].

Blue : DAPI for nuclear staining

Dilution : 1:100



For full product information, images and publications, please visit our [website](https://www.genetex.com).