

TFE3 antibody [GT1317]

Cat. No. GTX03229

| | |
|--------------|-------------------|
| Host | Rabbit |
| Clonality | Monoclonal |
| Isotype | IgG |
| Applications | WB, IHC-P |
| Reactivity | Human, Mouse, Rat |

Package
100 µl

Applications

Application Note

*Optimal dilutions/concentrations should be determined by the researcher.

| Suggested dilution | Recommended dilution |
|--------------------|----------------------|
| WB | 1:500 - 1:2000 |
| IHC-P | 1:50 - 1:200 |

Not tested in other applications.

Calculated MW 62 kDa. ([Note](#))

Observed MW (kDa) 89/72 kDa. The observed M.W. is based on the following publication. PMID: 21209915

Properties

| | |
|---------------|--|
| Form | Liquid |
| Buffer | PBS, 0.05% BSA, 50% Glycerol |
| Preservative | 0.02% Sodium azide |
| Storage | Store as concentrated solution. Centrifuge briefly prior to opening vial. For short-term storage (1-2 weeks), store at 4°C. For long-term storage, aliquot and store at -20°C or below. Avoid multiple freeze-thaw cycles. |
| Concentration | 0.75 mg/ml (Please refer to the vial label for the specific concentration.) |
| Immunogen | A synthesized peptide derived from human TFE3. |
| Purification | Purified by affinity chromatography |
| Conjugation | Unconjugated |

Note

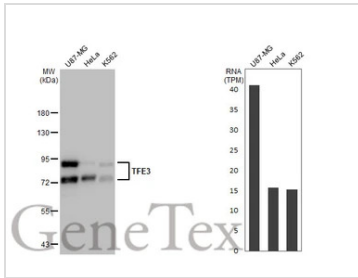
For laboratory research use only. Not for any clinical, therapeutic, or diagnostic use in humans or animals. Not for animal or human consumption.

Purchasers shall not, and agree not to enable third parties to, analyze, copy, reverse engineer or otherwise attempt to determine the structure or sequence of the product.



For full product information, images and publications, please visit our [website](#).

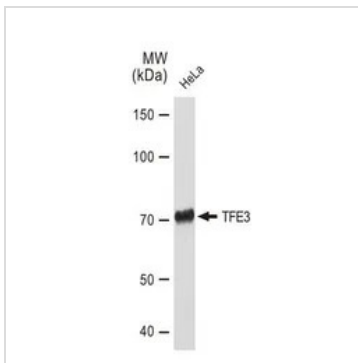
DATA IMAGES



GTX03229 WB Image

Various whole cell extracts (30 µg) were separated by 7.5% SDS-PAGE, and the membrane was blotted with TFE3 antibody [GT1317] (GTX03229) diluted at 1:1000. The HRP-conjugated anti-rabbit IgG antibody (GTX213110-01) was used to detect the primary antibody.

The observed M.W. is based on the publication: PMID: 21209915

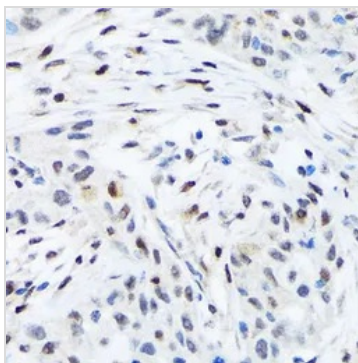


GTX03229 WB Image

WB analysis of HeLa whole cell lysate using GTX03229 TFE3 antibody [GT1317].

Dilution : 1:1000

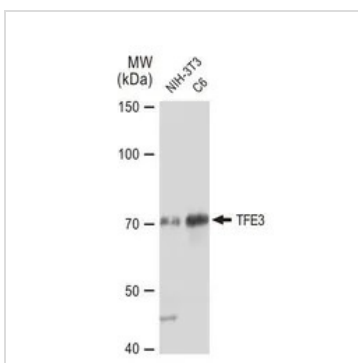
Loading : 25µg per lane



GTX03229 IHC-P Image

IHC-P analysis of human esophageal cancer section using GTX03229 TFE3 antibody [GT1317].

Dilution : 1:100



GTX03229 WB Image

WB analysis of various samples using GTX03229 TFE3 antibody [GT1317].

Dilution : 1:1000

Loading : 25µg per lane



For full product information, images and publications, please visit our [website](https://www.genetex.com).