

## Xanthine Oxidase antibody [GT1319]

**Cat. No. GTX03231**

<b>Host</b>	Rabbit
<b>Clonality</b>	Monoclonal
<b>Isotype</b>	IgG
<b>Applications</b>	WB, ICC/IF, IHC-P
<b>Reactivity</b>	Mouse, Rat

**Package**  
100 µl

## Applications

**Application Note**

\*Optimal dilutions/concentrations should be determined by the researcher.

Suggested dilution	Recommended dilution
WB	1:500 - 1:150000
ICC/IF	1:50 - 1:200
IHC-P	1:50 - 1:200

Not tested in other applications.

**Calculated MW** 146 kDa. ([Note](#))

## Properties

<b>Form</b>	Liquid
<b>Buffer</b>	PBS, 0.05% BSA, 50% Glycerol
<b>Preservative</b>	0.02% Sodium azide
<b>Storage</b>	Store as concentrated solution. Centrifuge briefly prior to opening vial. For short-term storage (1-2 weeks), store at 4°C. For long-term storage, aliquot and store at -20°C or below. Avoid multiple freeze-thaw cycles.
<b>Concentration</b>	0.37 mg/ml (Please refer to the vial label for the specific concentration.)
<b>Immunogen</b>	A synthesized peptide derived from human Xanthine Oxidase.
<b>Purification</b>	Purified by affinity chromatography
<b>Conjugation</b>	Unconjugated

**Note**

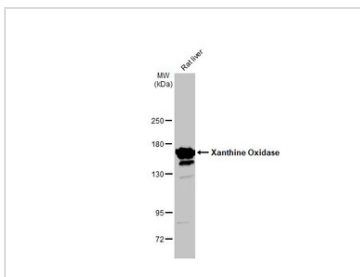
For laboratory research use only. Not for any clinical, therapeutic, or diagnostic use in humans or animals. Not for animal or human consumption.

Purchasers shall not, and agree not to enable third parties to, analyze, copy, reverse engineer or otherwise attempt to determine the structure or sequence of the product.

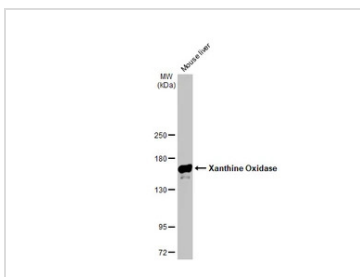


For full product information, images and publications, please visit our [website](#).

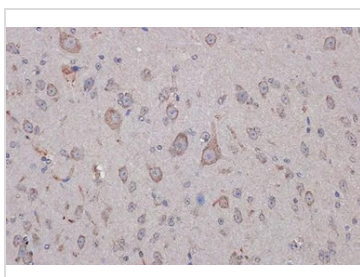
## DATA IMAGES

**GTX03231 WB Image**

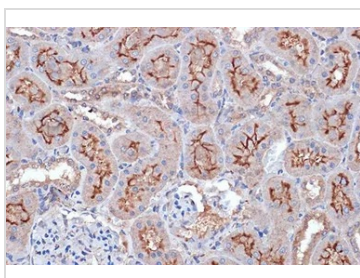
Rat tissue extract (50 µg) was separated by 5% SDS-PAGE, and the membrane was blotted with Xanthine Oxidase antibody [GT1319] (GTX03231) diluted at 1:50000. The HRP-conjugated anti-rabbit IgG antibody (GTX213110-01) was used to detect the primary antibody.

**GTX03231 WB Image**

Mouse tissue extract (50 µg) was separated by 5% SDS-PAGE, and the membrane was blotted with Xanthine Oxidase antibody [GT1319] (GTX03231) diluted at 1:150000. The HRP-conjugated anti-rabbit IgG antibody (GTX213110-01) was used to detect the primary antibody.

**GTX03231 IHC-P Image**

IHC-P analysis of mouse brain tissue section using GTX03231 Xanthine Oxidase antibody [GT1319].  
Dilution : 1:100

**GTX03231 IHC-P Image**

IHC-P analysis of rat kidney tissue section using GTX03231 Xanthine Oxidase antibody [GT1319].  
Dilution : 1:100



For full product information, images and publications, please visit our [website](#).