

SMC1 (phospho Ser957) antibody [GT1321]

Cat. No. GTX03233

Host	Rabbit
Clonality	Monoclonal
Isotype	IgG
Applications	WB, IHC-P
Reactivity	Human, Mouse, Rat

Package
100 µl

Applications

Application Note

*Optimal dilutions/concentrations should be determined by the researcher.

Suggested dilution	Recommended dilution
WB	1:500 - 1:2000
IHC-P	1:50 - 1:200

Not tested in other applications.

Calculated MW 143 kDa. ([Note](#))

Properties

Form	Liquid
Buffer	PBS, 0.05% BSA, 50% Glycerol
Preservative	0.02% Sodium azide
Storage	Store as concentrated solution. Centrifuge briefly prior to opening vial. For short-term storage (1-2 weeks), store at 4°C. For long-term storage, aliquot and store at -20°C or below. Avoid multiple freeze-thaw cycles.
Concentration	0.61 mg/ml (Please refer to the vial label for the specific concentration.)
Immunogen	A phospho specific peptide corresponding to residues surrounding S957 of human SMC1.
Purification	Purified by affinity chromatography
Conjugation	Unconjugated

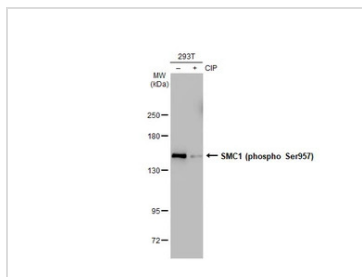
Note

For laboratory research use only. Not for any clinical, therapeutic, or diagnostic use in humans or animals. Not for animal or human consumption.

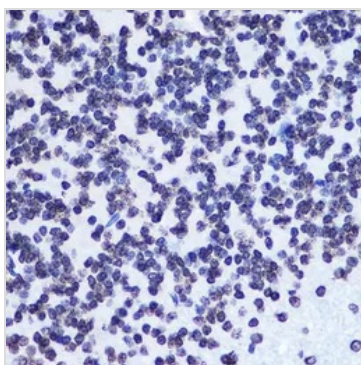
Purchasers shall not, and agree not to enable third parties to, analyze, copy, reverse engineer or otherwise attempt to determine the structure or sequence of the product.



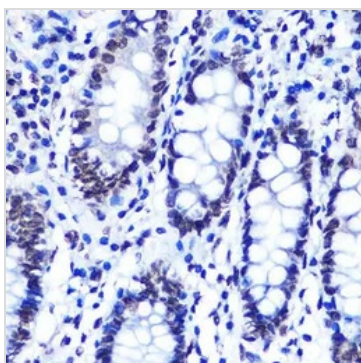
For full product information, images and publications, please visit our [website](#).

DATA IMAGES

GTX03233 WB Image

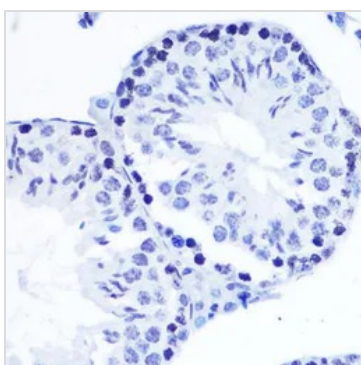
Untreated (–) and treated (+) 293T whole cell extracts (30 µg) were separated by 5% SDS-PAGE, and the membrane was blotted with SMC1 (phospho Ser957) antibody [GT1321] (GTX03233) diluted at 1:500. The HRP-conjugated anti-rabbit IgG antibody (GTX213110-01) was used to detect the primary antibody.


GTX03233 IHC-P Image

IHC-P analysis of rat brain tissue section using GTX03233 SMC1 (phospho Ser957) antibody [GT1321].
Dilution : 1:100


GTX03233 IHC-P Image

IHC-P analysis of human colon tissue section using GTX03233 SMC1 (phospho Ser957) antibody [GT1321].
Dilution : 1:100


GTX03233 IHC-P Image

IHC-P analysis of mouse testis tissue section using GTX03233 SMC1 (phospho Ser957) antibody [GT1321].
Dilution : 1:100



For full product information, images and publications, please visit our [website](https://www.genetex.com).