

PAK4 (phospho Ser474) / PAK5 (phospho Ser602) / PAK6 (phospho Ser560) antibody [GT1344]

Cat. No. GTX03256

Host	Rabbit
Clonality	Monoclonal
Isotype	IgG
Applications	WB
Reactivity	Human, Mouse, Rat

Package

100 µl

Applications

Application Note

*Optimal dilutions/concentrations should be determined by the researcher.

Suggested dilution	Recommended dilution
--------------------	----------------------

WB	1:500 - 1:2000
----	----------------

Not tested in other applications.

Properties

Form	Liquid
Buffer	PBS, 0.05% BSA, 50% Glycerol
Preservative	0.02% Sodium azide
Storage	Store as concentrated solution. Centrifuge briefly prior to opening vial. For short-term storage (1-2 weeks), store at 4°C. For long-term storage, aliquot and store at -20°C or below. Avoid multiple freeze-thaw cycles.
Concentration	1.65 mg/ml (Please refer to the vial label for the specific concentration.)
Immunogen	A phospho specific peptide corresponding to residues surrounding S474 of human PAK4.
Purification	Purified by affinity chromatography
Conjugation	Unconjugated

Note

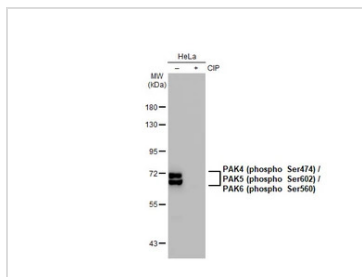
For laboratory research use only. Not for any clinical, therapeutic, or diagnostic use in humans or animals. Not for animal or human consumption.

Purchasers shall not, and agree not to enable third parties to, analyze, copy, reverse engineer or otherwise attempt to determine the structure or sequence of the product.



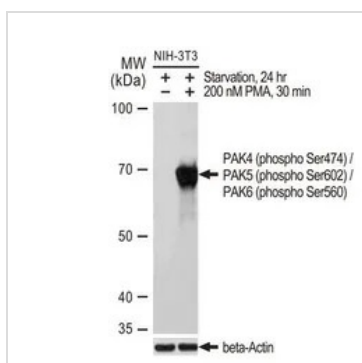
For full product information, images and publications, please visit our [website](#).

DATA IMAGES



GTX03256 WB Image

Untreated (-) and treated (+) HeLa whole cell extracts (30 µg) were separated by 7.5% SDS-PAGE, and the membrane was blotted with PAK4 (phospho Ser474) / PAK5 (phospho Ser602) / PAK6 (phospho Ser560) antibody [GT1344] (GTX03256) diluted at 1:500. The HRP-conjugated anti-rabbit IgG antibody (GTX213110-01) was used to detect the primary antibody.

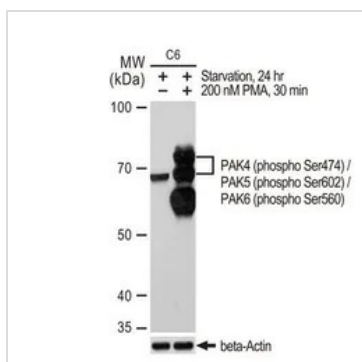


GTX03256 WB Image

WB analysis of NIH-3T3 cells were treated by PMA/TPA (200 nM) at 37°C for 30 minutes after serum-starvation overnight using GTX03256 PAK4 (phospho Ser474) / PAK5 (phospho Ser602) / PAK6 (phospho Ser560) antibody [GT1344].

Dilution : 1:1000

Loading : 25µg per lane



GTX03256 WB Image

WB analysis of C6 cells were treated by PMA/TPA (200 nM) at 37°C for 30 minutes after serum-starvation overnight using GTX03256 PAK4 (phospho Ser474) / PAK5 (phospho Ser602) / PAK6 (phospho Ser560) antibody [GT1344].

Dilution : 1:1000

Loading : 25µg per lane



For full product information, images and publications, please visit our [website](#).