

Involucrin antibody

Cat. No. GTX03271

Host	Rabbit
Clonality	Polyclonal
Isotype	IgG
Applications	WB, ICC/IF, IHC-P
Reactivity	Human, Mouse

Package
100 µl

Applications

Application Note

*Optimal dilutions/concentrations should be determined by the researcher.

Suggested dilution	Recommended dilution
WB	1:500-1:3000
ICC/IF	1:100-1:500
IHC-P	1:50-1:200

Not tested in other applications.

Calculated MW 68 kDa. ([Note](#))

Properties

Form	Liquid
Buffer	PBS, 150mM NaCl, 50% Glycerol
Preservative	0.02% Sodium azide
Storage	Store as concentrated solution. Centrifuge briefly prior to opening vial. For short-term storage (1-2 weeks), store at 4°C. For long-term storage, aliquot and store at -20°C or below. Avoid multiple freeze-thaw cycles.
Concentration	1 mg/ml (Please refer to the vial label for the specific concentration.)
Immunogen	A synthesized peptide derived from Human IVL(Accession P07476), corresponding to amino acid residues T561-K583.
Purification	Purified by antigen-affinity chromatography
Conjugation	Unconjugated

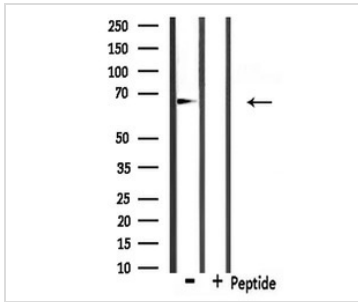
Note

For laboratory research use only. Not for any clinical, therapeutic, or diagnostic use in humans or animals. Not for animal or human consumption.

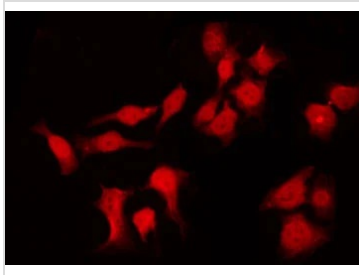
Purchasers shall not, and agree not to enable third parties to, analyze, copy, reverse engineer or otherwise attempt to determine the structure or sequence of the product.



For full product information, images and publications, please visit our [website](#).

DATA IMAGES

GTX03271 WB Image

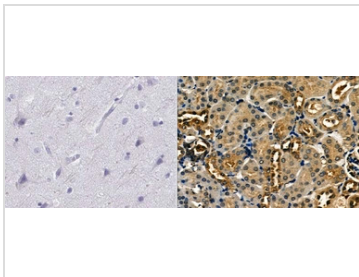
WB analysis of 293 lysate using GTX03271 Involucrin antibody. The lane on the right was treated with blocking peptide.


GTX03271 ICC/IF Image

ICC/IF analysis of PFA-fixed HUVEC cells using GTX03271 Involucrin antibody.

Permeabilization : 0.1% Triton X-100

Dilution : 1:200


GTX03271 IHC-P Image

IHC-P analysis of mouse brain (left panel) and kidney (right panel) tissue using GTX03271 Involucrin antibody.

Antigen retrieval : Heat mediated antigen retrieval step in citrate buffer was performed

Dilution : 1:100



For full product information, images and publications, please visit our [website](https://www.genetex.com).