

# BMP5 antibody

**Cat. No. GTX03273**

<b>Host</b>	Rabbit
<b>Clonality</b>	Polyclonal
<b>Isotype</b>	IgG
<b>Application</b>	WB, IHC-P, FACS, ELISA
<b>Reactivity</b>	Human, Mouse, Rat

**Package**  
100 µg

## APPLICATION

### Application Note

\*Optimal dilutions/concentrations should be determined by the researcher.

Suggested dilution	Recommended dilution
WB	0.1-0.5µg/ml
IHC-P	0.5-1µg/ml
FACS	1-3µg/1x10 <sup>6</sup> cells
ELISA	0.1-0.5µg/ml

Not tested in other applications.

**Calculated MW** 52 kDa. ( [Note](#) )

## PROPERTIES

<b>Form</b>	Liquid
<b>Buffer</b>	5mg BSA, 0.9mg NaCl, 0.2mg Na <sub>2</sub> HPO <sub>4</sub>
<b>Preservative</b>	0.05mg Sodium azide
<b>Storage</b>	Store as concentrated solution. Centrifuge briefly prior to opening vial. For short-term storage (1-2 weeks), store at 4°C. For long-term storage, aliquot and store at -20°C or below. Avoid multiple freeze-thaw cycles.
<b>Concentration</b>	0.5 mg/ml (Please refer to the vial label for the specific concentration.)
<b>Immunogen</b>	A synthetic peptide corresponding to a sequence at the C-terminus of human BMP-5 (332-365aa HQDSSRMSSVGDYNTSEQKQACKKHELYVSFRDL), different from the related mouse sequence by three amino acids.
<b>Purification</b>	Purified by antigen-affinity chromatography
<b>Conjugation</b>	Unconjugated

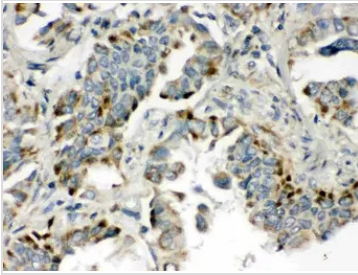


For full product information, images and publications, please visit our [website](#).

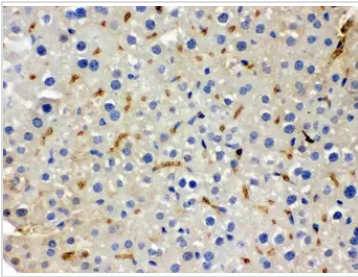
For laboratory research use only. Not for any clinical, therapeutic, or diagnostic use in humans or animals. Not for animal or human consumption.

**Note**

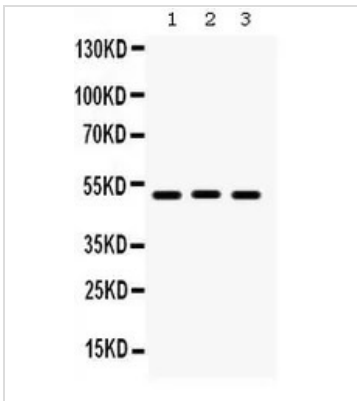
Purchasers shall not, and agree not to enable third parties to, analyze, copy, reverse engineer or otherwise attempt to determine the structure or sequence of the product.

**DATA IMAGES**

**GTX03273 IHC-P Image**

IHC-P analysis of human lung cancer tissue using GTX03273 BMP5 antibody.


**GTX03273 IHC-P Image**

IHC-P analysis of mouse liver tissue using GTX03273 BMP5 antibody.


**GTX03273 WB Image**

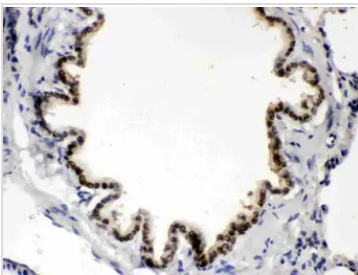
WB analysis of various sample lysates using GTX03273 BMP5 antibody.

Lane 1 : Rat Liver tissue lysate (50µg)

Lane 2 : Mouse Liver tissue lysate (50µg)

Lane 3 : A549 cell lysate (40µg)

Dilution : 0.5µg/ml


**GTX03273 IHC-P Image**

IHC-P analysis of rat lung tissue using GTX03273 BMP5 antibody.



For full product information, images and publications, please visit our [website](https://www.genetex.com).