

Caspase 3 (cleaved Asp175) antibody

Cat. No. GTX03281

Host	Rabbit
Clonality	Polyclonal
Isotype	IgG
Application	WB, ICC/IF, IHC-P
Reactivity	Human, Mouse

Reference (1)
Package
100 µl

APPLICATION

Application Note

*Optimal dilutions/concentrations should be determined by the researcher.

Suggested dilution	Recommended dilution
WB	1:500-1:2000
ICC/IF	1:100-1:500
IHC-P	1:50-1:200

Not tested in other applications.

PROPERTIES

Form	Liquid
Buffer	PBS, 150mM NaCl, 50% Glycerol
Preservative	0.02% Sodium azide
Storage	Store as concentrated solution. Centrifuge briefly prior to opening vial. For short-term storage (1-2 weeks), store at 4°C. For long-term storage, aliquot and store at -20°C or below. Avoid multiple freeze-thaw cycles.
Concentration	1 mg/ml (Please refer to the vial label for the specific concentration.)
Immunogen	A synthesized peptide derived from Human CASP3 (Accession P42574), corresponding to amino acid residues C163-M182.
Purification	Purified by antigen-affinity chromatography From serum
Conjugation	Unconjugated

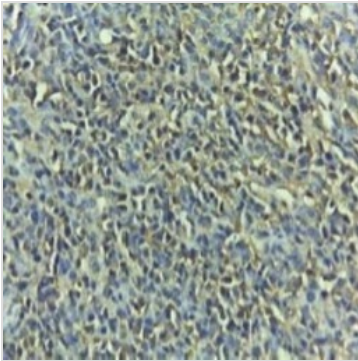
Note

For laboratory research use only. Not for any clinical, therapeutic, or diagnostic use in humans or animals. Not for animal or human consumption.

Purchasers shall not, and agree not to enable third parties to, analyze, copy, reverse engineer or otherwise attempt to determine the structure or sequence of the product.



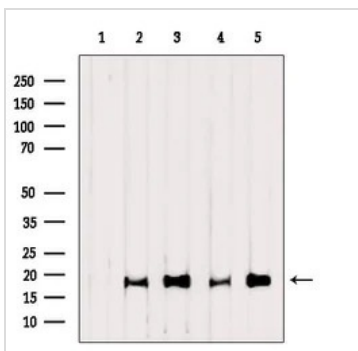
For full product information, images and publications, please visit our [website](#).

DATA IMAGES

GTX03281 IHC-P Image

IHC-P analysis of human ehrlich carcinoma tissue using GTX03281 Caspase 3 (cleaved Asp175) antibody.

Antigen retrieval : Heat mediated antigen retrieval step in citrate buffer was performed.

Dilution : 1:100


GTX03281 WB Image

WB analysis of various sample lysates using GTX03281 Caspase 3 (cleaved Asp175) antibody.

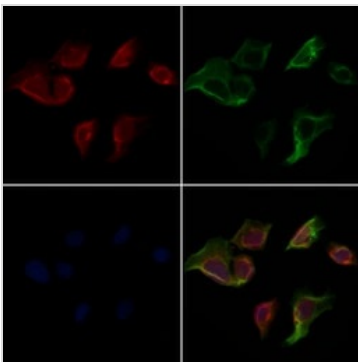
Lane 1 : HeLa treated with blocking peptide

Lane 2 : HeLa (etoposide treated, 25µM 5h)

Lane 3 : MCF7 (etoposide treated, 25µM 5h)

Lane 4 : Mouse heart tissue lysate

Lane 5 : Mouse spleen tissue lysate


GTX03281 ICC/IF Image

ICC/IF analysis of PFA-fixed HeLa cells using GTX03281 Caspase 3 (cleaved Asp175) antibody.

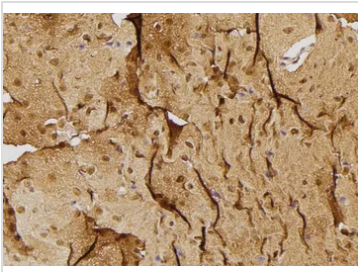
Red : Primary antibody

Green : beta tubulin

Blue : DAPI

Permeabilization : 0.1% Triton X-100

Dilution : 1:200


GTX03281 IHC-P Image

IHC-P analysis of mouse brain tissue using GTX03281 Caspase 3 (cleaved Asp175) antibody.

Antigen retrieval : Heat mediated antigen retrieval step in citrate buffer was performed.

Dilution : 1:100



For full product information, images and publications, please visit our [website](https://www.genetex.com).