

Mammaglobin A antibody [EPR 9092]

Cat. No. GTX03314

Host	Rabbit
Clonality	Monoclonal
Isotype	IgG
Applications	IHC-P
Reactivity	Human

Package
500 µl

Applications

Application Note

*Optimal dilutions/concentrations should be determined by the researcher.

Suggested dilution	Recommended dilution
IHC-P	1:50-1:75

Note : Pretreatment : Citrate Buffer pH 6.0 for 30 min at RT

Not tested in other applications.

Properties

Form	Liquid
Buffer	Tissue culture supernatant
Preservative	0.09% Sodium azide
Storage	Store as concentrated solution. Centrifuge briefly prior to opening vial. Store at 4°C.
Immunogen	A recombinant protein fragment corresponding to human Mammaglobin A
Purification	Unpurified
Conjugation	Unconjugated

Note

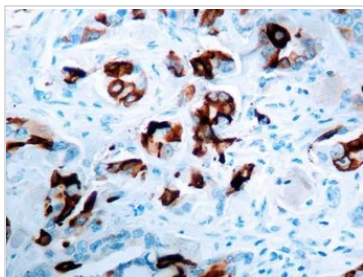
For laboratory research use only. Not for any clinical, therapeutic, or diagnostic use in humans or animals. Not for animal or human consumption.

Purchasers shall not, and agree not to enable third parties to, analyze, copy, reverse engineer or otherwise attempt to determine the structure or sequence of the product.



For full product information, images and publications, please visit our [website](#).

DATA IMAGES



GTX03314 IHC-P Image

IHC-P analysis of human breast carcinoma tissue section using GTX03314 Mammaglobin A antibody [EPR 9092].



For full product information, images and publications, please visit our [website](#).