

## BCL6 antibody [PG-B6]

Cat. No. GTX03321

<b>Host</b>	Mouse
<b>Clonality</b>	Monoclonal
<b>Isotype</b>	IgG1
<b>Applications</b>	IHC-P
<b>Reactivity</b>	Human

Package  
500 µl

## Applications

## Application Note

\*Optimal dilutions/concentrations should be determined by the researcher.

Suggested dilution	Recommended dilution
IHC-P	1:50-1:100

**Note : Pretreatment : EDTA Buffer pH 8.0 for 30 min at RT**

Not tested in other applications.

## Properties

<b>Form</b>	Liquid
<b>Buffer</b>	Tissue culture supernatant
<b>Preservative</b>	0.09% Sodium azide
<b>Storage</b>	Store as concentrated solution. Centrifuge briefly prior to opening vial. Store at 4°C.
<b>Immunogen</b>	Recombinant BCL6 protein corresponding to amino acids 3-484 of the human BCL6 protein
<b>Purification</b>	Unpurified
<b>Conjugation</b>	Unconjugated

## Note

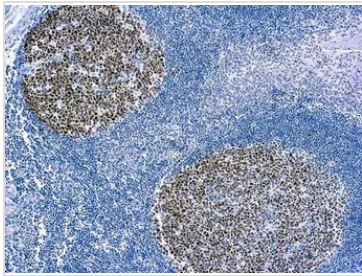
For laboratory research use only. Not for any clinical, therapeutic, or diagnostic use in humans or animals. Not for animal or human consumption.

Purchasers shall not, and agree not to enable third parties to, analyze, copy, reverse engineer or otherwise attempt to determine the structure or sequence of the product.



For full product information, images and publications, please visit our [website](#).

## DATA IMAGES

**GTX03321 IHC-P Image**

IHC-P analysis of human tonsil tissue section using GTX03321 BCL6 antibody [PG-B6].



For full product information, images and publications, please visit our [website](#).