

IGF1 antibody

Cat. No. GTX03348

Host	Goat
Clonality	Polyclonal
Isotype	IgG
Applications	WB, ICC/IF, IHC-P, FCM
Reactivity	Human

Package
100 µg

Applications

Application Note

*Optimal dilutions/concentrations should be determined by the researcher.

Suggested dilution	Recommended dilution
WB	0.5-2µg/ml
ICC/IF	10µg/ml
IHC-P	3.75µg/ml
FCM	10µg/ml

Note : Permeabilization : 0.5% Triton

Not tested in other applications.

Calculated MW 22 kDa. ([Note](#))

Properties

Form	Liquid
Buffer	Tris, 0.5% BSA
Preservative	0.02% Sodium azide
Storage	Store as concentrated solution. Centrifuge briefly prior to opening vial. For short-term storage (1-2 weeks), store at 4°C. For long-term storage, aliquot and store at -20°C or below. Avoid multiple freeze-thaw cycles.
Concentration	0.5 mg/ml (Please refer to the vial label for the specific concentration.)
Immunogen	Peptide with sequence C-RSVRAQRHTD, from the internal region of the protein sequence according to NP_001104753.1; NP_001104754.1; NP_001104755.1; NP_000609.1.
Purification	Purified by ammonium sulphate precipitation followed by antigen-affinity chromatography From serum
Conjugation	Unconjugated



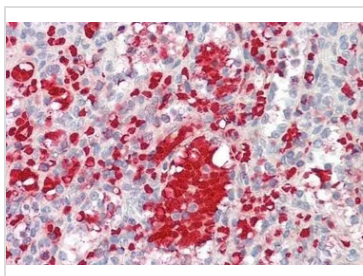
For full product information, images and publications, please visit our [website](#).

For laboratory research use only. Not for any clinical, therapeutic, or diagnostic use in humans or animals. Not for animal or human consumption.

Note

Purchasers shall not, and agree not to enable third parties to, analyze, copy, reverse engineer or otherwise attempt to determine the structure or sequence of the product.

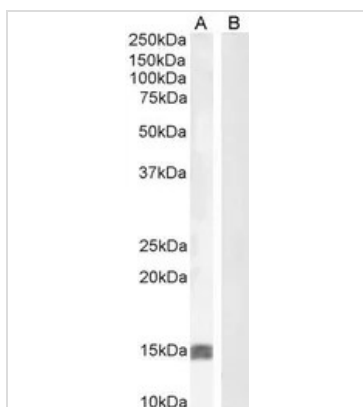
DATA IMAGES

**GTX03348 IHC-P Image**

IHC-P analysis of human spleen tissue using GTX03348 IGF1 antibody.

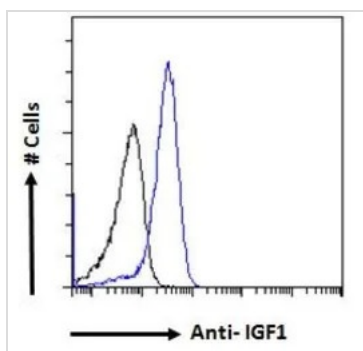
Dilution : 3.75µg/ml

Antigen retrieval : Steamed antigen retrieval with citrate buffer pH 6.

**GTX03348 WB Image**

WB analysis of human uterus (Lane A) and negative control HepG2 (Lane B) lysate (35µg protein in RIPA buffer) using GTX03348 IGF1 antibody.

Dilution : 0.5µg/ml

**GTX03348 FCM Image**

FACS analysis of PFA-fixed A549 cells using GTX03348 IGF1 antibody.

Blue : Primary antibody

Black : Isotype control

Permeabilization : 0.5% Triton

Dilution : 10µg/ml



For full product information, images and publications, please visit our [website](#).