

Chk2 (phospho Thr68) antibody

Cat. No. GTX03351

| | |
|---------------------|--------------------------|
| Host | Rabbit |
| Clonality | Polyclonal |
| Isotype | IgG |
| Applications | WB, ICC/IF, IHC-P, ELISA |
| Reactivity | Human, Mouse, Rat |

Package
100 µl

Applications

Application Note

*Optimal dilutions/concentrations should be determined by the researcher.

| Suggested dilution | Recommended dilution |
|--------------------|----------------------|
| WB | 1:500-1:2000 |
| ICC/IF | 1:100-1:500 |
| IHC-P | 1:50-1:200 |
| ELISA | Assay dependent |

Not tested in other applications.

Calculated MW 61 kDa. ([Note](#))

Properties

| | |
|----------------------|--|
| Form | Liquid |
| Buffer | PBS, 150mM NaCl, 50% Glycerol |
| Preservative | 0.02% Sodium azide |
| Storage | Store as concentrated solution. Centrifuge briefly prior to opening vial. For short-term storage (1-2 weeks), store at 4°C. For long-term storage, aliquot and store at -20°C or below. Avoid multiple freeze-thaw cycles. |
| Concentration | 1 mg/ml (Please refer to the vial label for the specific concentration.) |
| Immunogen | A synthesized peptide derived from Human CHEK2(Accession O96017), corresponding to amino acid residues S56-P75. |
| Purification | Purified by affinity purification via sequential chromatography on phospho-peptide and non-phospho-peptide affinity columns. From serum |
| Conjugation | Unconjugated |



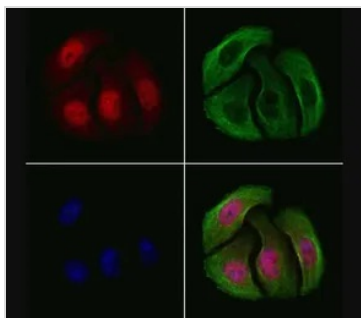
For full product information, images and publications, please visit our [website](#).

For laboratory research use only. Not for any clinical, therapeutic, or diagnostic use in humans or animals. Not for animal or human consumption.

Note

Purchasers shall not, and agree not to enable third parties to, analyze, copy, reverse engineer or otherwise attempt to determine the structure or sequence of the product.

DATA IMAGES



GTX03351 ICC/IF Image

ICC/IF analysis of PFA-fixed HeLa cells (4h of LPS treatment) using GTX03351 Chk2 (phospho Thr68) antibody.

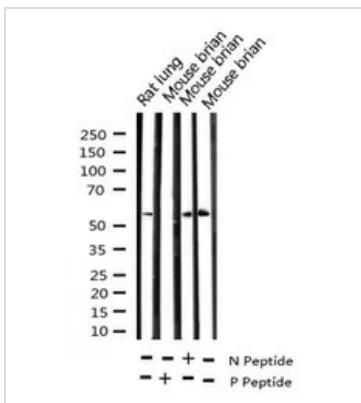
Red : Primary antibody

Green : Beta tubulin

Blue : DAPI

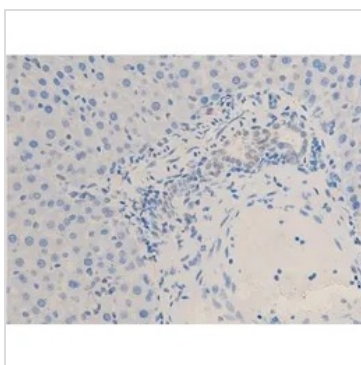
Permeabilization : 0.1% Triton X-100

Dilution : 1:200



GTX03351 WB Image

WB analysis of rat lung and mouse brain tissue lysate using GTX03351 Chk2 (phospho Thr68) antibody. -/+ means absence or presence of N peptide(non-phospho peptide) and P peptide(phospho peptide).



GTX03351 IHC-P Image

IHC-P analysis of rat liver tissue using GTX03351 Chk2 (phospho Thr68) antibody.

Antigen retrieval : heat mediated antigen retrieval step in citrate buffer was performed.

Dilution : 1:100



For full product information, images and publications, please visit our [website](#).