

AGEs antibody

Cat. No. GTX03353

Host	Rabbit
Clonality	Polyclonal
Isotype	IgG
Applications	WB, IHC-P, FCM
Reactivity	Species independent

Package
100 µl

PRODUCT

Summary AGEs antibody reacts with Advanced Glycation End products (AGEs). AGEs are the result of a chain of chemical reactions after an initial glycation reaction.

Applications

Application Note

*Optimal dilutions/concentrations should be determined by the researcher.

Suggested dilution	Recommended dilution
WB	1:300-1:1000
IHC-P	1:200-1:400
FCM	1:20-100

Not tested in other applications.

Properties

Form	Liquid
Buffer	1% BSA, 50% Glycerol
Preservative	0.09% Sodium azide
Storage	Store as concentrated solution. Centrifuge briefly prior to opening vial. For short-term storage (1-2 weeks), store at 4°C. For long-term storage, aliquot and store at -20°C or below. Avoid multiple freeze-thaw cycles.
Concentration	1 mg/ml (Please refer to the vial label for the specific concentration.)
Immunogen	BSA-AGE
Purification	Protein A purified
Conjugation	Unconjugated

Note

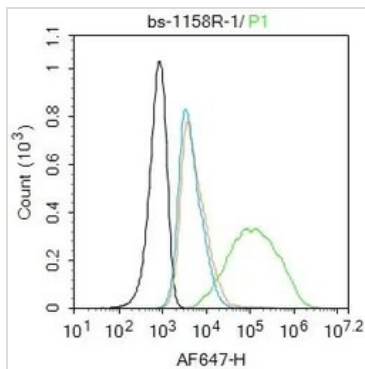
For laboratory research use only. Not for any clinical, therapeutic, or diagnostic use in humans or animals. Not for animal or human consumption.

Purchasers shall not, and agree not to enable third parties to, analyze, copy, reverse engineer or otherwise attempt to determine the structure or sequence of the product.



For full product information, images and publications, please visit our [website](#).

DATA IMAGES



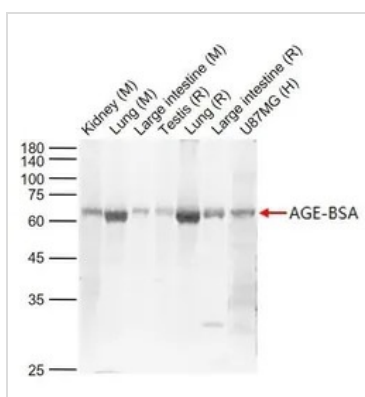
GTX03353 FCM Image

FACS analysis of MCF7 cells using GTX03353 AGEs antibody. Acquisitions of 20,000 events were performed.

Green : Primary antibody

Orange : Isotype control

Dilution : 1:100



GTX03353 WB Image

WB analysis of various sample lysates using GTX03353 AGEs antibody.

Lane 1 : Mouse Kidney tissue lysate

Lane 2 : Mouse Lung tissue lysate

Lane 3 : Mouse Large intestine tissue lysate

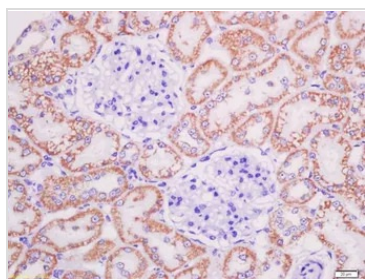
Lane 4 : Rat Testis tissue lysate

Lane 5 : Rat Lung tissue lysate

Lane 6 : Rat Large intestine tissue lysate

Lane 7 : U87MG whole cell lysate

Dilution : 1:1000



GTX03353 IHC-P Image

IHC-P analysis of rat kidney tissue using GTX03353 AGEs antibody.

Antigen retrieval : Boiling in sodium citrate buffer (pH6) for 15min

Dilution : 1:200



For full product information, images and publications, please visit our [website](#).