

## ZO-2 antibody

Cat. No. GTX03355

Host	Rabbit
Clonality	Polyclonal
Isotype	IgG
Applications	WB, ICC/IF, IHC-P, FCM
Reactivity	Human, Mouse, Rat, Monkey

Package  
100 µg

## Applications

## Application Note

\*Optimal dilutions/concentrations should be determined by the researcher.

Suggested dilution	Recommended dilution
WB	0.25-0.5µg/ml
ICC/IF	5µg/ml
IHC-P	2-5µg/ml
FCM	1-3µg/1x10 <sup>6</sup> cells

Not tested in other applications.

Calculated MW 134 kDa. ([Note](#))

## Properties

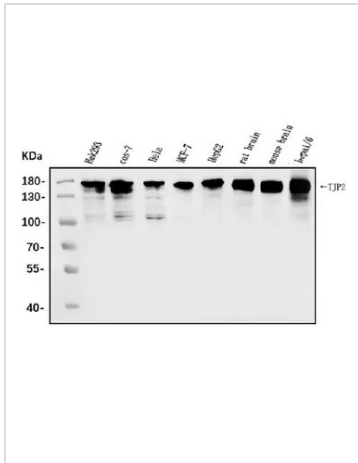
Form	Liquid
Buffer	4mg Trehalose, 0.9mg NaCl, 0.2mg Na <sub>2</sub> HPO <sub>4</sub>
Preservative	No preservatives
Storage	Store as concentrated solution. Centrifuge briefly prior to opening vial. For short-term storage (1-2 weeks), store at 4°C. For long-term storage, aliquot and store at -20°C or below. Avoid multiple freeze-thaw cycles.
Concentration	0.5 mg/ml (Please refer to the vial label for the specific concentration.)
Immunogen	A synthetic peptide corresponding to a sequence of human TJP2/ZO2 (QEAQNARIEIAQKHPDIYAVPIK).
Purification	Purified by antigen-affinity chromatography
Conjugation	Unconjugated

## Note

For laboratory research use only. Not for any clinical, therapeutic, or diagnostic use in humans or animals. Not for animal or human consumption.

Purchasers shall not, and agree not to enable third parties to, analyze, copy, reverse engineer or otherwise attempt to determine the structure or sequence of the product.

For full product information, images and publications, please visit our [website](#).

**DATA IMAGES**

**GTX03355 WB Image**

WB analysis of various sample lysates using GTX03355 TJP2 antibody.

Lane 1 : HEK293 whole cell lysates

Lane 2 : COS-7 whole cell lysates

Lane 3 : HeLa whole cell lysates

Lane 4 : MCF-7 whole cell lysates

Lane 5 : HepG2 whole cell lysates

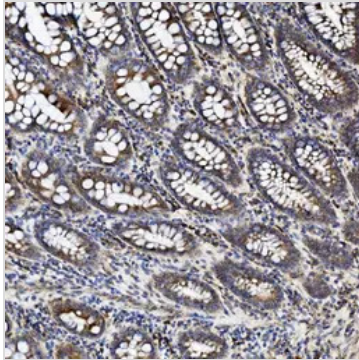
Lane 6 : rat brain tissue lysates

Lane 7 : mouse brain tissue lysates

Lane 8 : HEPA1-6 whole cell lysates

Dilution : 0.5 µg/mL

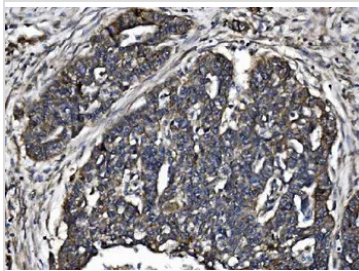
Loading : 30µg per lane


**GTX03355 IHC-P Image**

IHC-P analysis of human rectal cancer tissue using GTX03355 TJP2 antibody.

Antigen retrieval : Heat mediated antigen retrieval was performed in EDTA buffer (pH8.0, epitope retrieval solution)

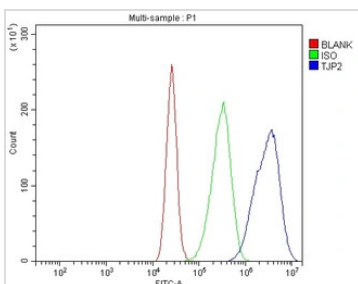
Dilution : 2µg/ml


**GTX03355 IHC-P Image**

IHC-P analysis of human ovarian serous adenocarcinoma tissue using GTX03355 TJP2 antibody.

Antigen retrieval : Heat mediated antigen retrieval was performed in EDTA buffer (pH8.0, epitope retrieval solution)

Dilution : 2µg/ml


**GTX03355 FCM Image**

FACS analysis of CACO-2 cells using GTX03355 TJP2 antibody.

Blue : Primary antibody

Green : Isotype control

Red : Unlabelled sample

Antibody amount : 1µg/1x10<sup>6</sup> cells for 30 min at 20°C



For full product information, images and publications, please visit our [website](https://www.genetex.com).