

## MAP3K8 antibody

Cat. No. GTX03357

<b>Host</b>	Rabbit
<b>Clonality</b>	Polyclonal
<b>Isotype</b>	IgG
<b>Applications</b>	WB, ICC/IF, IHC-P, FCM
<b>Reactivity</b>	Human, Mouse, Rat

Package  
100 µg

## Applications

## Application Note

\*Optimal dilutions/concentrations should be determined by the researcher.

Suggested dilution	Recommended dilution
WB	0.1-0.5µg/ml
ICC/IF	5µg/ml
IHC-P	0.5-1µg/ml
FCM	1-3µg/1x10 <sup>6</sup> cells

## Note : Antigen retrieval by Heat

Not tested in other applications.

**Calculated MW** 53 kDa. ([Note](#))

## Properties

<b>Form</b>	Liquid
<b>Buffer</b>	5mg BSA, 0.9mg NaCl, 0.2mg Na <sub>2</sub> HPO <sub>4</sub>
<b>Preservative</b>	0.05mg Sodium azide
<b>Storage</b>	Store as concentrated solution. Centrifuge briefly prior to opening vial. For short-term storage (1-2 weeks), store at 4°C. For long-term storage, aliquot and store at -20°C or below. Avoid multiple freeze-thaw cycles.
<b>Concentration</b>	0.5 mg/ml (Please refer to the vial label for the specific concentration.)
<b>Immunogen</b>	E.coli-derived human MAP3K8 recombinant protein (Position: D9-L193).
<b>Purification</b>	Purified by antigen-affinity chromatography
<b>Conjugation</b>	Unconjugated



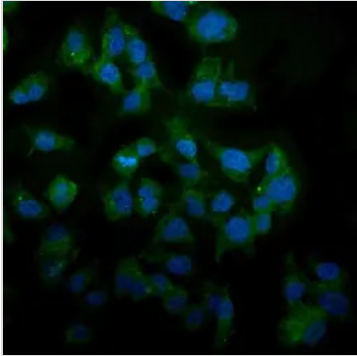
For full product information, images and publications, please visit our [website](#).

For laboratory research use only. Not for any clinical, therapeutic, or diagnostic use in humans or animals. Not for animal or human consumption.

**Note**

Purchasers shall not, and agree not to enable third parties to, analyze, copy, reverse engineer or otherwise attempt to determine the structure or sequence of the product.

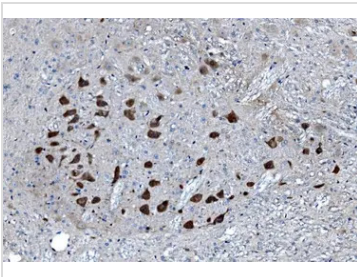
## DATA IMAGES

**GTX03357 ICC/IF Image**

ICC/IF analysis of HepG2 cells using GTX03357 MAP3K8 antibody.

Antigen retrieval : enzyme antigen retrieval reagent for 15 min

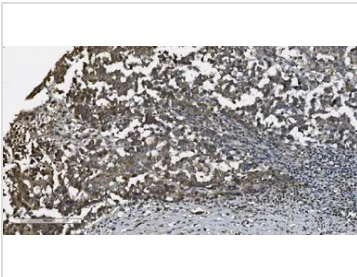
Dilution : 5µg/mL

**GTX03357 IHC-P Image**

IHC-P analysis of rat brain tissue using GTX03357 MAP3K8 antibody.

Antigen retrieval : Heat mediated antigen retrieval was performed in EDTA buffer (pH8.0, epitope retrieval solution).

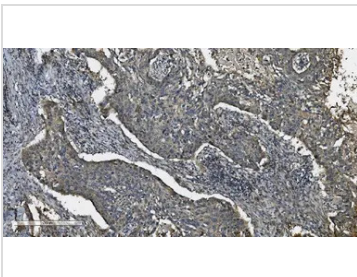
Dilution : 1µg/ml

**GTX03357 IHC-P Image**

IHC-P analysis of human pancreatic cancer tissue using GTX03357 MAP3K8 antibody.

Antigen retrieval : Heat mediated antigen retrieval was performed in EDTA buffer (pH8.0, epitope retrieval solution).

Dilution : 1µg/ml

**GTX03357 IHC-P Image**

IHC-P analysis of human lung cancer tissue using GTX03357 MAP3K8 antibody.

Antigen retrieval : Heat mediated antigen retrieval was performed in EDTA buffer (pH8.0, epitope retrieval solution).

Dilution : 1µg/ml



For full product information, images and publications, please visit our [website](#).