

## MUTYH antibody

Cat. No. GTX03359

Host	Rabbit
Clonality	Polyclonal
Isotype	IgG
Applications	WB, ICC/IF, IHC-P
Reactivity	Human, Mouse

Package  
100 µl

## Applications

## Application Note

\*Optimal dilutions/concentrations should be determined by the researcher.

Suggested dilution	Recommended dilution
WB	1:500-1:2000
ICC/IF	1:100-1:500
IHC-P	1:50-1:200

Not tested in other applications.

Calculated MW 60 kDa. ( [Note](#) )

## Properties

Form	Liquid
Buffer	PBS, 150mM NaCl, 50% Glycerol
Preservative	0.02% Sodium azide
Storage	Store as concentrated solution. Centrifuge briefly prior to opening vial. For short-term storage (1-2 weeks), store at 4°C. For long-term storage, aliquot and store at -20°C or below. Avoid multiple freeze-thaw cycles.
Concentration	1 mg/ml (Please refer to the vial label for the specific concentration.)
Immunogen	A synthesized peptide derived from Human MUTYH (Accession Q9UIF7), corresponding to amino acid residues N168-V191.
Purification	Purified by antigen-affinity chromatography
Conjugation	Unconjugated

## Note

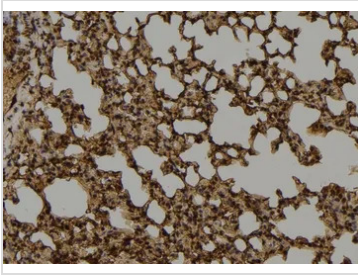
For laboratory research use only. Not for any clinical, therapeutic, or diagnostic use in humans or animals. Not for animal or human consumption.

Purchasers shall not, and agree not to enable third parties to, analyze, copy, reverse engineer or otherwise attempt to determine the structure or sequence of the product.



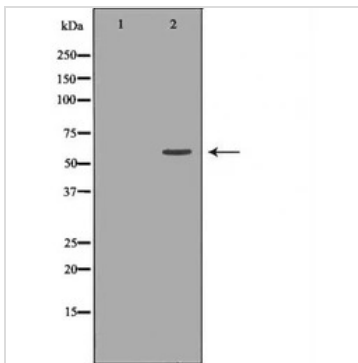
For full product information, images and publications, please visit our [website](#).

## DATA IMAGES



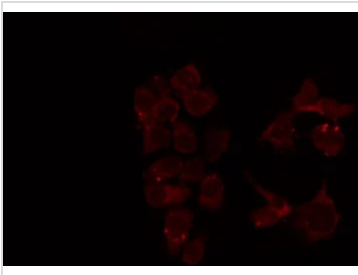
### GTx03359 IHC-P Image

IHC-P analysis of mouse lung tissue section using GTx03359 MUTYH antibody.  
Antigen retrieval : Heat mediated antigen retrieval step in citrate buffer was performed.  
Dilution : 1:100



### GTx03359 WB Image

WB analysis of HeLa whole cell lysate using GTx03359 MUTYH antibody. The lane on the left was treated with the antigen-specific peptide.



### GTx03359 ICC/IF Image

ICC/IF analysis of PFA-fixed HeLa cells using GTx03359 MUTYH antibody.  
Permeabilization : 0.1% Triton X-100  
Dilution : 1:200



For full product information, images and publications, please visit our [website](https://www.genetex.com).