

MUTYH antibody

Cat. No. GTX03360

| | |
|---------------------|-----------------|
| Host | Rabbit |
| Clonality | Polyclonal |
| Isotype | IgG |
| Applications | WB, ICC/IF, FCM |
| Reactivity | Human, Mouse |

Package
400 µl

Applications

Application Note

*Optimal dilutions/concentrations should be determined by the researcher.

| Suggested dilution | Recommended dilution |
|--------------------|----------------------|
| WB | 1:1000 |
| ICC/IF | 1:10-1:50 |
| FCM | 1:10-1:50 |

Not tested in other applications.

Calculated MW 60 kDa. ([Note](#))

Properties

| | |
|----------------------|--|
| Form | Liquid |
| Buffer | PBS |
| Preservative | 0.09% Sodium azide |
| Storage | Store as concentrated solution. Centrifuge briefly prior to opening vial. For short-term storage (1-2 weeks), store at 4°C. For long-term storage, aliquot and store at -20°C or below. Avoid multiple freeze-thaw cycles. |
| Concentration | Batch dependent (Please refer to the vial label for the specific concentration.) |
| Immunogen | KLH conjugated synthetic peptide between 341-367 amino acids from the Central region of human MUTYH. |
| Purification | Purified by Saturated Ammonium Sulfate (SAS) precipitation followed by dialysis against PBS |
| Conjugation | Unconjugated |

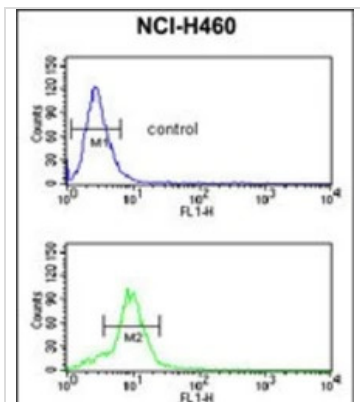
Note

For laboratory research use only. Not for any clinical, therapeutic, or diagnostic use in humans or animals. Not for animal or human consumption.

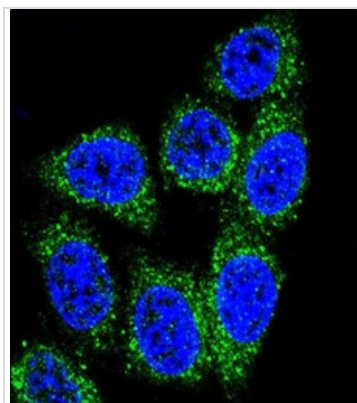
Purchasers shall not, and agree not to enable third parties to, analyze, copy, reverse engineer or otherwise attempt to determine the structure or sequence of the product.



For full product information, images and publications, please visit our [website](#).

DATA IMAGES

GTX03360 FCM Image

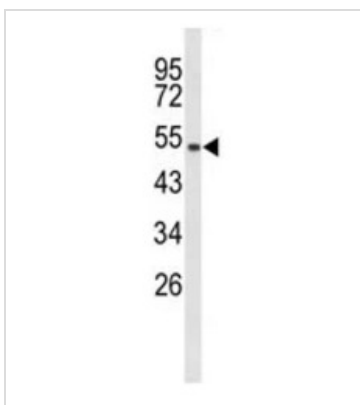
FACS analysis of NCI-H460 cells (bottom histogram) compared to a negative control cell (top histogram) using GTX03360 MUTYH antibody.


GTX03360 ICC/IF Image

ICC/IF analysis of HeLa cells using GTX03360 MUTYH antibody.

Green : Primary antibody

Blue : DAPI


GTX03360 WB Image

WB analysis of mouse lung tissue lysate (35µg/lane) using GTX03360 MUTYH antibody.



For full product information, images and publications, please visit our [website](#).