

PLK1 (phospho Thr210) antibody

Cat. No. GTX03368

Host	Rabbit
Clonality	Polyclonal
Isotype	IgG
Applications	WB, ICC/IF, IHC-P, ELISA
Reactivity	Human, Mouse

Package
100 µl

Applications

Application Note

*Optimal dilutions/concentrations should be determined by the researcher.

Suggested dilution	Recommended dilution
WB	1:500-1:2000
ICC/IF	1:100-1:500
IHC-P	1:50-1:200
ELISA	Assay dependent

Not tested in other applications.

Calculated MW 68 kDa. ([Note](#))

Properties

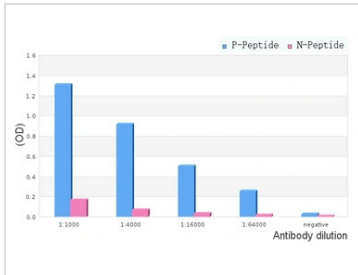
Form	Liquid
Buffer	PBS, 150mM NaCl, 50% Glycerol
Preservative	0.02% Sodium azide
Storage	Store as concentrated solution. Centrifuge briefly prior to opening vial. For short-term storage (1-2 weeks), store at 4°C. For long-term storage, aliquot and store at -20°C or below. Avoid multiple freeze-thaw cycles.
Concentration	1 mg/ml (Please refer to the vial label for the specific concentration.)
Immunogen	A synthesized peptide derived from Human PLK1 (Accession P53350), corresponding to amino acid residues D194-V222.
Purification	Purified by sequential chromatography on phospho-peptide and non-phospho-peptide affinity columns From serum
Conjugation	Unconjugated

For full product information, images and publications, please visit our [website](#).

For laboratory research use only. Not for any clinical, therapeutic, or diagnostic use in humans or animals. Not for animal or human consumption.

Note

Purchasers shall not, and agree not to enable third parties to, analyze, copy, reverse engineer or otherwise attempt to determine the structure or sequence of the product.

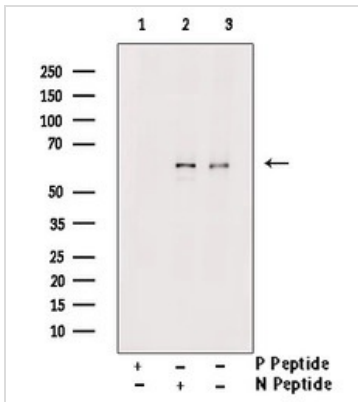
DATA IMAGES

GTX03368 ELISA Image

ELISA analysis of phospho- and non phospho- immunogen peptide using GTX03368 PLK1 (phospho Thr210) antibody.

P-peptide : phospho-peptide

N-peptide : non-phospho-peptide

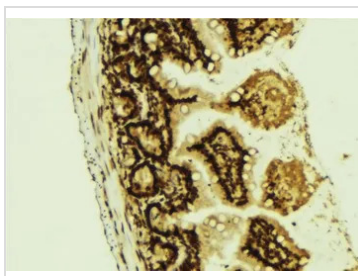
Peptides concentration : 1µg/ml


GTX03368 WB Image

WB analysis of extracts from HeLa cells treated with thymidine/nocodazole using GTX03368 PLK1 (phospho Thr210) antibody.

Lane 1 : primary antibody pre-treated with phospho-blocking peptide.

Lane 2 : primary antibody pre-treated with non-phospho-blocking peptide.


GTX03368 IHC-P Image

IHC-P analysis of mouse colon tissue sections using GTX03368 PLK1 (phospho Thr210) antibody.

Antigen retrieval : Heat mediated antigen retrieval step in citrate buffer was performed.

Dilution : 1:100



For full product information, images and publications, please visit our [website](https://www.genetex.com).