

# FOXO1 (Acetyl Lys294) antibody

**Cat. No. GTX03372**

<b>Host</b>	Rabbit
<b>Clonality</b>	Polyclonal
<b>Isotype</b>	IgG
<b>Application</b>	WB, IHC-P
<b>Reactivity</b>	Human, Monkey

**Package**  
100 µl

## APPLICATION

### Application Note

\*Optimal dilutions/concentrations should be determined by the researcher.

Suggested dilution	Recommended dilution
WB	1:500-1:2000
IHC-P	1:50-1:200

Not tested in other applications.

**Calculated MW** 70 kDa. ( [Note](#) )

## PROPERTIES

<b>Form</b>	Liquid
<b>Buffer</b>	PBS, 150mM NaCl, 50% Glycerol
<b>Preservative</b>	0.02% Sodium azide
<b>Storage</b>	Store as concentrated solution. Centrifuge briefly prior to opening vial. For short-term storage (1-2 weeks), store at 4°C. For long-term storage, aliquot and store at -20°C or below. Avoid multiple freeze-thaw cycles.
<b>Concentration</b>	1 mg/ml (Please refer to the vial label for the specific concentration.)
<b>Immunogen</b>	A synthesized peptide derived from Human FOXO1 (Accession Q12778), corresponding to amino acid residues E282-H302.
<b>Purification</b>	Purified by antigen-affinity chromatography From serum
<b>Conjugation</b>	Unconjugated

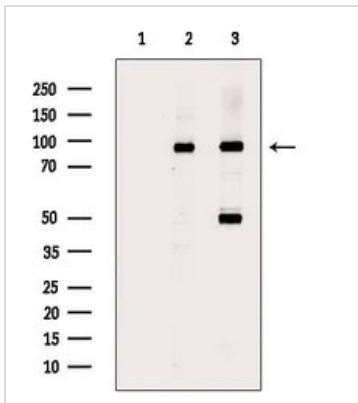
**Note**

For laboratory research use only. Not for any clinical, therapeutic, or diagnostic use in humans or animals. Not for animal or human consumption.

Purchasers shall not, and agree not to enable third parties to, analyze, copy, reverse engineer or otherwise attempt to determine the structure or sequence of the product.



For full product information, images and publications, please visit our [website](#).

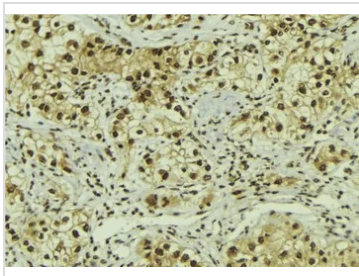
**DATA IMAGES**

**GTX03372 WB Image**

WB analysis of various samples using GTX03372 FOXO1 (Acetyl Lys294) antibody.

Lane 1 : Heat-shock treated COS-7 cell lysate blocked with antigen-specific peptides

Lane 2 : Heat-shock treated COS-7 cell lysate

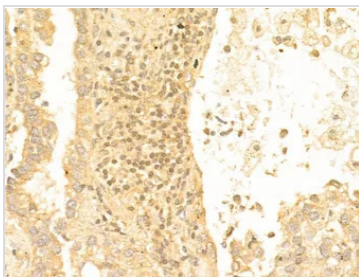
Lane 3 : LPS treated A2780 cell lysate


**GTX03372 IHC-P Image**

IHC-P analysis of human breast cancer tissue section using GTX03372 FOXO1 (Acetyl Lys294) antibody.

Antigen retrieval : Heat mediated antigen retrieval step in citrate buffer was performed.

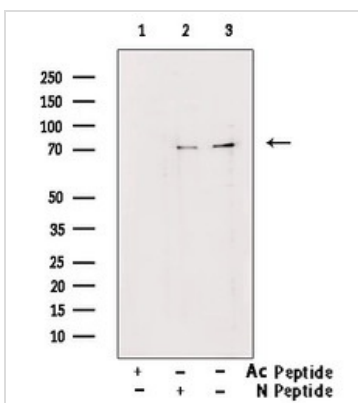
Dilution : 1:100


**GTX03372 IHC-P Image**

IHC-P analysis of human lung cancer tissue section using GTX03372 FOXO1 (Acetyl Lys294) antibody.

Antigen retrieval : Heat mediated antigen retrieval step in citrate buffer was performed.

Dilution : 1:100


**GTX03372 WB Image**

WB analysis of TSA treated HeLa cell lysate using GTX03372 FOXO1 (Acetyl Lys294) antibody.

Lane1 : Primary antibody pre-treated with Ac-blocking peptide

Lane2 : Primary antibody pre-treated with Non-Ac-blocking peptide



For full product information, images and publications, please visit our [website](https://www.genetex.com).