

# Human CD28 (ECD) protein, human IgG Fc tag and His tag

**Cat. No. GTX03373-pro**

**Applications** Functional Assay

**Species** Human

**Package**

100 µg

## Applications

### Application Note

Binding assay: Measured by its binding ability in a functional ELISA with Human CD80 protein. The ED<sub>50</sub> range ≤ 10µg/ml.

**Observed MW (kDa)** 42 kDa.

## Properties

**Form** Liquid

**Buffer** PBS, 10% Glycerol

**Preservative** No preservatives

**Storage** Store as concentrated solution. Centrifuge briefly prior to opening vial. For short-term storage (1-2 weeks), store at 4°C. For long-term storage, aliquot and store at -20°C or below. Avoid multiple freeze-thaw cycles.

**Concentration** 1 mg/ml (Please refer to the vial label for the specific concentration.)

**Region/Sequence** 19-152aa (NP\_006130)

**Expression System** Baculovirus

**Purity** > 90% by SDS-PAGE

**Conjugation** Unconjugated

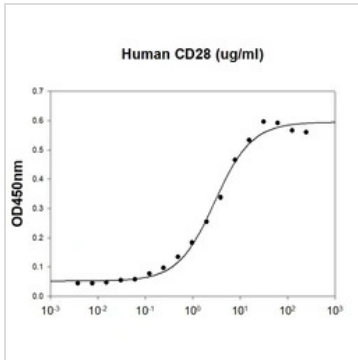
### Note

For laboratory research use only. Not for any clinical, therapeutic, or diagnostic use in humans or animals. Not for animal or human consumption.

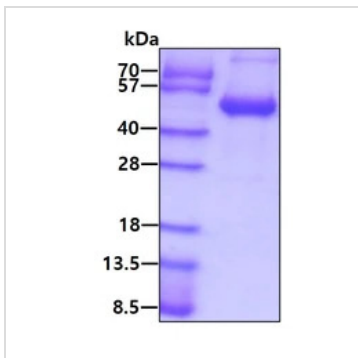
Purchasers shall not, and agree not to enable third parties to, analyze, copy, reverse engineer or otherwise attempt to determine the structure or sequence of the product.



For full product information, images and publications, please visit our [website](https://www.genetex.com).

**DATA IMAGES**

**GTX03373-pro Functional Assay Image**

Functional ELISA analysis of immobilized human CD80 protein at 1  $\mu$ g/ml (100  $\mu$ l/well) can bind GTX03373-pro Human CD28 (ECD) protein, human IgG Fc tag and His tag. The ED<sub>50</sub> range  $\leq$  10 $\mu$ g/ml.


**GTX03373-pro Image**

SDS-PAGE of 3 $\mu$ g GTX03373-pro Human CD28 (ECD) protein, human IgG Fc tag and His tag.



For full product information, images and publications, please visit our [website](https://www.genetex.com).