

CD8 alpha antibody

Cat. No. GTX03377

Host	Rabbit
Clonality	Polyclonal
Isotype	IgG
Applications	WB, IP, ELISA
Reactivity	Human

Package
100 µg

Applications

Application Note

*Optimal dilutions/concentrations should be determined by the researcher.

Suggested dilution	Recommended dilution
WB	Assay dependent
IP	Assay dependent
ELISA	Assay dependent

Not tested in other applications.

Calculated MW 26 kDa. ([Note](#))

Properties

Form	Liquid
Buffer	Tris-Glycine, 0.5% BSA, 30% Glycerol
Preservative	0.02% Sodium azide
Storage	Store as concentrated solution. Centrifuge briefly prior to opening vial. For short-term storage (1-2 weeks), store at 4°C. For long-term storage, aliquot and store at -20°C or below. Avoid multiple freeze-thaw cycles.
Concentration	0.5-1.5 mg/ml (Please refer to the vial label for the specific concentration.)
Immunogen	Synthetic peptide taken within amino acid region 1-50 on human T-cell surface glycoprotein CD8 Alpha chain.
Purification	Purified by antigen-affinity chromatography
Conjugation	Unconjugated

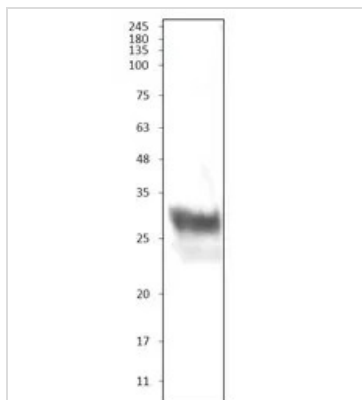
Note

For laboratory research use only. Not for any clinical, therapeutic, or diagnostic use in humans or animals. Not for animal or human consumption.

Purchasers shall not, and agree not to enable third parties to, analyze, copy, reverse engineer or otherwise attempt to determine the structure or sequence of the product.



For full product information, images and publications, please visit our [website](#).

DATA IMAGES

GTX03377 WB Image

WB analysis of CD8a recombinant protein using GTX03377 CD8 alpha antibody.

Dilution : 1:250



For full product information, images and publications, please visit our [website](#).