

## PRAME antibody

**Cat. No. GTX03381**

<b>Host</b>	Rabbit
<b>Clonality</b>	Polyclonal
<b>Isotype</b>	IgG
<b>Applications</b>	WB, IHC-P, FCM
<b>Reactivity</b>	Human

**Package**  
400 µl

## Applications

**Application Note**

\*Optimal dilutions/concentrations should be determined by the researcher.

Suggested dilution	Recommended dilution
WB	Assay dependent
IHC-P	Assay dependent
FCM	Assay dependent

Not tested in other applications.

**Calculated MW** 58 kDa. ([Note](#))

## Properties

<b>Form</b>	Liquid
<b>Buffer</b>	PBS
<b>Preservative</b>	0.09% Sodium azide
<b>Storage</b>	Store as concentrated solution. Centrifuge briefly prior to opening vial. For short-term storage (1-2 weeks), store at 4°C. For long-term storage, aliquot and store at -20°C or below. Avoid multiple freeze-thaw cycles.
<b>Concentration</b>	Batch dependent (Please refer to the vial label for the specific concentration.)
<b>Immunogen</b>	KLH conjugated synthetic peptide between 476-502 amino acids from the C-terminal region of human PRAME.
<b>Purification</b>	Protein A purified followed by antigen-affinity chromatography
<b>Conjugation</b>	Unconjugated

**Note**

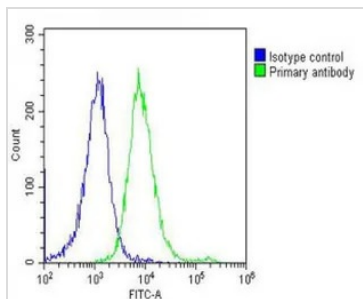
For laboratory research use only. Not for any clinical, therapeutic, or diagnostic use in humans or animals. Not for animal or human consumption.

Purchasers shall not, and agree not to enable third parties to, analyze, copy, reverse engineer or otherwise attempt to determine the structure or sequence of the product.



For full product information, images and publications, please visit our [website](#).

DATA IMAGES



**GTX03381 FCM Image**

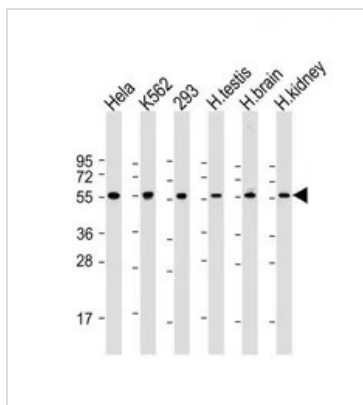
FACS analysis of 2% PFA-fixed HeLa cells using GTX03381 PRAME antibody. Acquisition of > 10, 000 events was performed.

Green : Primary antibody

Blue : Isotype control

Permeabilization : 90% methanol for 10 min

Dilution : 1:25



**GTX03381 WB Image**

WB analysis of various sample lysates using GTX03381 PRAME antibody.

Lane 1 : HeLa whole cell lysate

Lane 2 : K562 whole cell lysate

Lane 3 : 293 whole cell lysate

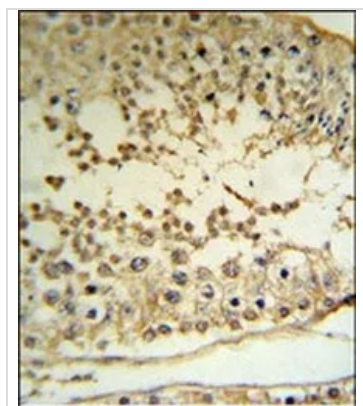
Lane 4 : human testis tissue lysate

Lane 5 : human brain tissue lysate

Lane 6 : human kidney tissue lysate

Dilution : 1:2000

Loading : 20 µg per lane



**GTX03381 IHC-P Image**

IHC-P analysis of human testis tissue using GTX03381 PRAME antibody.



For full product information, images and publications, please visit our [website](#).