

KLF2 antibody

Cat. No. GTX03383

Host	Rabbit
Clonality	Polyclonal
Isotype	IgG
Application	WB, ICC/IF, IHC-P, IHC-Fr, ChIP assay
Reactivity	Human, Mouse, Rat, Rabbit

Reference (1)

Package

100 µl

APPLICATION

Application Note

*Optimal dilutions/concentrations should be determined by the researcher.

Suggested dilution	Recommended dilution
WB	Assay dependent
ICC/IF	Assay dependent
IHC-P	Assay dependent
IHC-Fr	Assay dependent
ChIP assay	Assay dependent

Not tested in other applications.

Calculated MW 37 kDa. ([Note](#))

PROPERTIES

Form	Liquid
Buffer	1% BSA, 50% glycerol
Preservative	0.09% Sodium azide
Storage	Store as concentrated solution. Centrifuge briefly prior to opening vial. For short-term storage (1-2 weeks), store at 4°C. For long-term storage, aliquot and store at -20°C or below. Avoid multiple freeze-thaw cycles.
Concentration	1 mg/ml (Please refer to the vial label for the specific concentration.)
Immunogen	KLH conjugated synthetic peptide derived from human KLF2 (251-355).
Purification	Protein A purified
Conjugation	Unconjugated

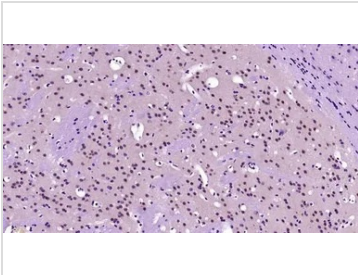


For full product information, images and publications, please visit our [website](#).

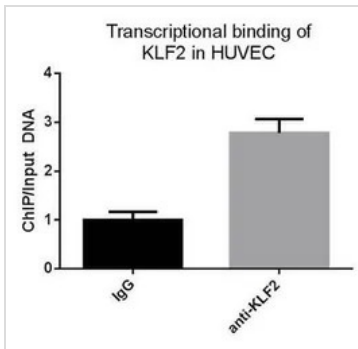
For laboratory research use only. Not for any clinical, therapeutic, or diagnostic use in humans or animals. Not for animal or human consumption.

Note

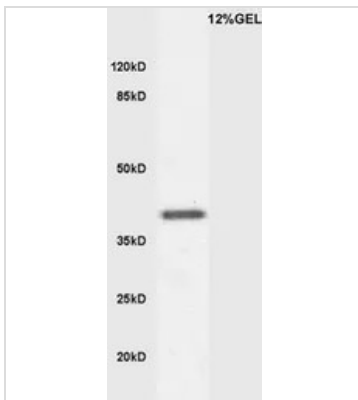
Purchasers shall not, and agree not to enable third parties to, analyze, copy, reverse engineer or otherwise attempt to determine the structure or sequence of the product.

DATA IMAGES

GTX03383 IHC-P Image

IHC-P analysis of mouse brain tissue lysate using GTX03383 KLF2 antibody.
Antigen retrieval : Boiling in sodium citrate buffer (0.01M, pH6) for 15 minutes
Dilution : 1:200


GTX03383 ChIP assay Image

ChIP analysis of HUVEC cells using GTX03383 KLF2 antibody.


GTX03383 WB Image

WB analysis of mouse embryo lysates using GTX03383 KLF2 antibody.
Dilution : 1:200



For full product information, images and publications, please visit our [website](https://www.genetex.com).