

Goat anti-Mouse IgM (mu chain) antibody, pre-adsorbed

Cat. No. GTX03389

Host	Goat
Clonality	Polyclonal
Isotype	IgG
Applications	WB, ICC/IF, IHC-P, IHC-Fr, FCM, IP, ELISA, EM
Reactivity	Mouse

Package
500 µg

Applications

Application Note

*Optimal dilutions/concentrations should be determined by the researcher.

Suggested dilution	Recommended dilution
WB	Assay dependent
ICC/IF	Assay dependent
IHC-P	Assay dependent
IHC-Fr	Assay dependent
FCM	Assay dependent
IP	Assay dependent
ELISA	Assay dependent
EM	Assay dependent

Not tested in other applications.

Product Note Preadsorbed with Mouse IgG and IgA, human immunoglobulins, and pooled sera. May react with immunoglobulins from other species.

Properties

Form	Liquid
Buffer	Borate buffered saline
Preservative	No preservatives
Storage	Store as concentrated solution. Centrifuge briefly prior to opening vial. For short-term storage (1-2 weeks), store at 4°C. For long-term storage, aliquot and store at -20°C or below. Avoid multiple freeze-thaw cycles.
Concentration	1 mg/ml (Please refer to the vial label for the specific concentration.)
Immunogen	Pooled antisera from goats hyperimmunized with mouse IgM
Purification	Purified by antigen-affinity chromatography



For full product information, images and publications, please visit our [website](#).

Conjugation

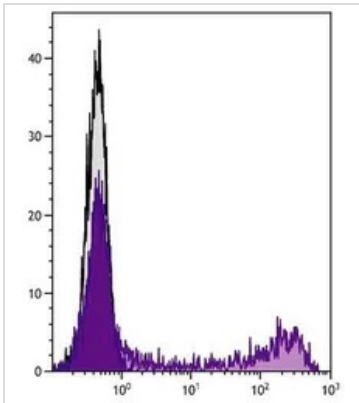
Unconjugated

For laboratory research use only. Not for any clinical, therapeutic, or diagnostic use in humans or animals. Not for animal or human consumption.

Note

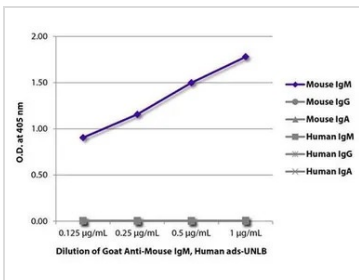
Purchasers shall not, and agree not to enable third parties to, analyze, copy, reverse engineer or otherwise attempt to determine the structure or sequence of the product.

DATA IMAGES



GTX03389 FCM Image

FACS analysis of Human peripheral blood lymphocytes using Mouse anti-Human CD57 antibody followed by GTX03389 Goat anti-Mouse IgM (mu chain) antibody, pre-adsorbed and Mouse Anti-Goat IgG Fc-AF488.



GTX03389 ELISA Image

ELISA analysis of purified mouse IgM, IgG, IgA, and human IgM, IgG, IgA using serially diluted GTX03389 Goat anti-Mouse IgM (mu chain) antibody, pre-adsorbed.



For full product information, images and publications, please visit our [website](#).