

Ki67 (phospho Thr1335) antibody

Cat. No. GTX03435

Host	Rabbit
Clonality	Polyclonal
Isotype	IgG
Applications	WB, IHC-P
Reactivity	Human, Mouse, Rat

Package
100 µl

Applications

Application Note

*Optimal dilutions/concentrations should be determined by the researcher.

Suggested dilution	Recommended dilution
WB	1:500-1:2000
IHC-P	1:50-1:200

Not tested in other applications.

Calculated MW 359 kDa. ([Note](#))

Properties

Form	Liquid
Buffer	PBS, 150mM NaCl, 50% Glycerol
Preservative	0.02% Sodium azide
Storage	Store as concentrated solution. Centrifuge briefly prior to opening vial. For short-term storage (1-2 weeks), store at 4°C. For long-term storage, aliquot and store at -20°C or below. Avoid multiple freeze-thaw cycles.
Concentration	1 mg/ml (Please refer to the vial label for the specific concentration.)
Immunogen	A synthesized peptide derived from human Ki67 around the phosphorylation site of Thr1335.
Purification	Purified by sequential chromatography on phospho-peptide and non-phospho-peptide affinity columns From serum
Conjugation	Unconjugated

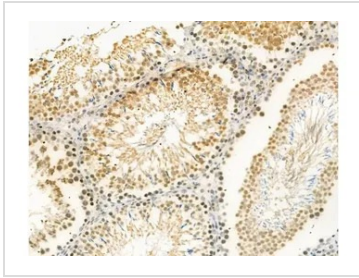
Note

For laboratory research use only. Not for any clinical, therapeutic, or diagnostic use in humans or animals. Not for animal or human consumption.

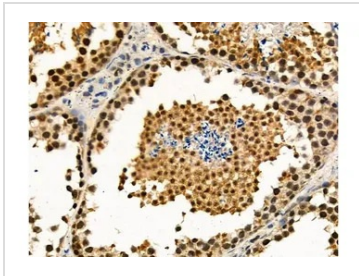
Purchasers shall not, and agree not to enable third parties to, analyze, copy, reverse engineer or otherwise attempt to determine the structure or sequence of the product.



For full product information, images and publications, please visit our [website](#).

DATA IMAGES

GTX03435 IHC-P Image

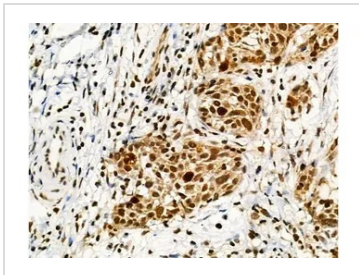
IHC-P analysis of rat testis tissue using GTX03435 Ki67 (phospho Thr1335) antibody.
 Antigen retrieval : Heat mediated antigen retrieval step in citrate buffer was performed.
 Dilution : 1:100


GTX03435 IHC-P Image

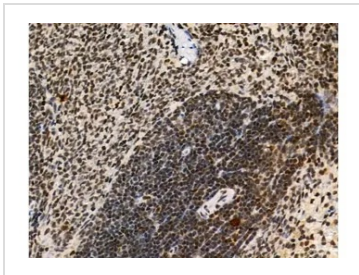
IHC-P analysis of mouse testis tissue using GTX03435 Ki67 (phospho Thr1335) antibody.
 Antigen retrieval : Heat mediated antigen retrieval step in citrate buffer was performed.
 Dilution : 1:100


GTX03435 IHC-P Image

IHC-P analysis of mouse heart tissue using GTX03435 Ki67 (phospho Thr1335) antibody.
 Antigen retrieval : Heat mediated antigen retrieval step in citrate buffer was performed.
 Dilution : 1:100


GTX03435 IHC-P Image

IHC-P analysis of human ovarian cancer tissue using GTX03435 Ki67 (phospho Thr1335) antibody.
 Antigen retrieval : Heat mediated antigen retrieval step in citrate buffer was performed.
 Dilution : 1:100


GTX03435 IHC-P Image

IHC-P analysis of rat spleen tissue using GTX03435 Ki67 (phospho Thr1335) antibody.
 Antigen retrieval : Heat mediated antigen retrieval step in citrate buffer was performed.
 Dilution : 1:100



For full product information, images and publications, please visit our [website](https://www.genetex.com).