

## DLL3 antibody

Cat. No. GTX03439

<b>Host</b>	Rabbit
<b>Clonality</b>	Polyclonal
<b>Isotype</b>	IgG
<b>Applications</b>	WB, ICC/IF, IHC-P
<b>Reactivity</b>	Human, Mouse, Rat

**Package**  
200 µl

## Applications

## Application Note

\*Optimal dilutions/concentrations should be determined by the researcher.

Suggested dilution	Recommended dilution
WB	1:2000
ICC/IF	1:25
IHC-P	1:500

Not tested in other applications.

**Calculated MW** 65 kDa. ( [Note](#) )

## Properties

<b>Form</b>	Liquid
<b>Buffer</b>	PBS
<b>Preservative</b>	0.09% sodium azide
<b>Storage</b>	Store as concentrated solution. Centrifuge briefly prior to opening vial. For short-term storage (1-2 weeks), store at 4°C. For long-term storage, aliquot and store at -20°C or below. Avoid multiple freeze-thaw cycles.
<b>Concentration</b>	Batch dependent (Please refer to the vial label for the specific concentration.)
<b>Immunogen</b>	KLH conjugated synthetic peptide between 519-548 amino acids from the C-terminal region of human DLL3.
<b>Purification</b>	Protein A purified followed by antigen-affinity chromatography
<b>Conjugation</b>	Unconjugated

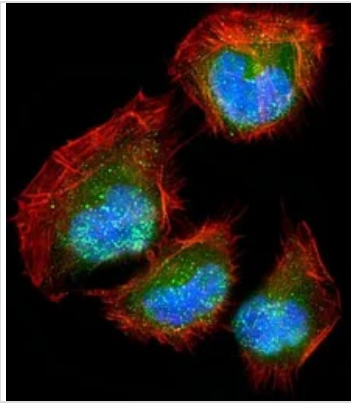
## Note

For laboratory research use only. Not for any clinical, therapeutic, or diagnostic use in humans or animals. Not for animal or human consumption.

Purchasers shall not, and agree not to enable third parties to, analyze, copy, reverse engineer or otherwise attempt to determine the structure or sequence of the product.



For full product information, images and publications, please visit our [website](#).

**DATA IMAGES**

**GTX03439 ICC/IF Image**

ICC/IF analysis of 4% PFA-fixed U2OS cells using GTX03439 DLL3 antibody.

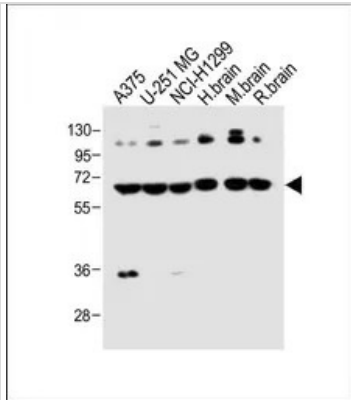
Green : Primary antibody

Red : Actin

Blue : DAPI

Permeabilization : 0.1% Triton X-100

Dilution : 1:25


**GTX03439 WB Image**

WB analysis of various sample lysates using GTX03439 DLL3 antibody.

Lane 1 : A375 whole cell lysate

Lane 2 : U-251 MG whole cell lysate

Lane 3 : NCI-H1299 whole cell lysate

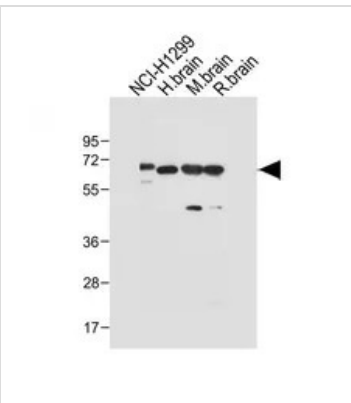
Lane 4 : Human brain tissue lysate

Lane 5 : Mouse brain tissue lysate

Lane 6 : Rat brain tissue lysate

Dilution : 1:1000

Loading : 20 µg per lane


**GTX03439 WB Image**

WB analysis of various sample lysates using GTX03439 DLL3 antibody.

Lane 1 : NCI-H1299 whole cell lysate

Lane 2 : Human brain tissue lysate

Lane 3 : Mouse brain tissue lysate

Lane 4 : Rat brain tissue lysate

Dilution : 1:1000

Loading : 20 µg per lane



For full product information, images and publications, please visit our [website](https://www.genetex.com).