

## A-Myb antibody

**Cat. No. GTX03441**

<b>Host</b>	Rabbit
<b>Clonality</b>	Polyclonal
<b>Isotype</b>	IgG
<b>Applications</b>	WB, ICC/IF
<b>Reactivity</b>	Human, Mouse

**Package**  
100 µl

### Applications

#### Application Note

\*Optimal dilutions/concentrations should be determined by the researcher.

Suggested dilution	Recommended dilution
WB	1:1000
ICC/IF	1:100-1:500

Not tested in other applications.

**Calculated MW** 86 kDa. ( [Note](#) )

### Properties

<b>Form</b>	Liquid
<b>Buffer</b>	PBS, 150mM NaCl, 50% Glycerol
<b>Preservative</b>	0.02% sodium azide
<b>Storage</b>	Store as concentrated solution. Centrifuge briefly prior to opening vial. For short-term storage (1-2 weeks), store at 4°C. For long-term storage, aliquot and store at -20°C or below. Avoid multiple freeze-thaw cycles.
<b>Concentration</b>	1 mg/ml (Please refer to the vial label for the specific concentration.)
<b>Immunogen</b>	A synthesized peptide derived from human MYBL1(Accession P10243), corresponding to amino acid residues T249-S277.
<b>Purification</b>	Purified by antigen-affinity chromatography From serum
<b>Conjugation</b>	Unconjugated

#### Note

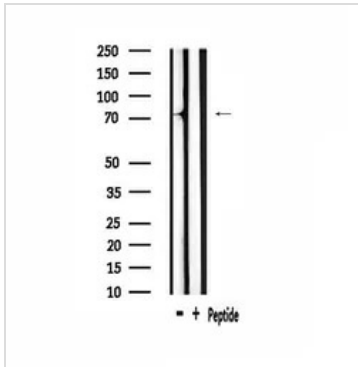
For laboratory research use only. Not for any clinical, therapeutic, or diagnostic use in humans or animals. Not for animal or human consumption.

Purchasers shall not, and agree not to enable third parties to, analyze, copy, reverse engineer or otherwise attempt to determine the structure or sequence of the product.



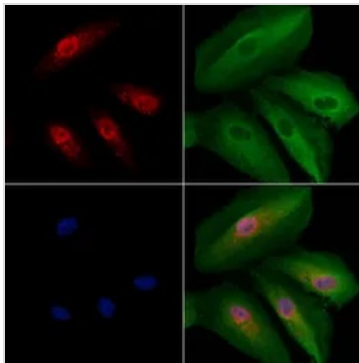
For full product information, images and publications, please visit our [website](#).

## DATA IMAGES



### GTX03441 WB Image

WB analysis of mouse muscle tissue lysate using GTX03441 A-Myb Antibody.



### GTX03441 ICC/IF Image

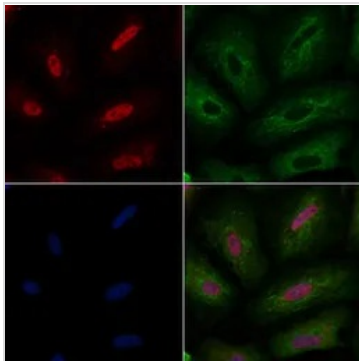
ICC/IF analysis of PFA-fixed A549 cells using GTX03441 A-Myb antibody.

Permeabilization : 0.1% Triton X-100

Red : Primary antibody

Green : beta tubulin

Blue : DAPI



### GTX03441 ICC/IF Image

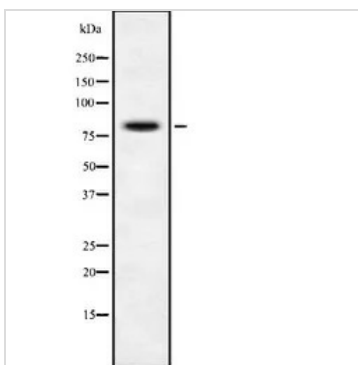
ICC/IF analysis of PFA-fixed A549 cells using GTX03441 A-Myb antibody.

Permeabilization : 0.1% Triton X-100

Red : Primary antibody

Green : beta tubulin

Blue : DAPI



### GTX03441 WB Image

WB analysis of LOVO cell lysate using GTX03441 A-Myb antibody.



For full product information, images and publications, please visit our [website](https://www.genetex.com).