

# DFNA5 antibody

**Cat. No. GTX03443**

<b>Host</b>	Rabbit
<b>Clonality</b>	Polyclonal
<b>Isotype</b>	IgG
<b>Applications</b>	WB, ICC/IF, IHC-P
<b>Reactivity</b>	Human, Mouse, Rat

**Package**  
100 µl

## Applications

### Application Note

\*Optimal dilutions/concentrations should be determined by the researcher.

Suggested dilution	Recommended dilution
WB	1:1000-1:3000
ICC/IF	1:100-1:500
IHC-P	1:200

Not tested in other applications.

**Calculated MW** 55 kDa. ( [Note](#) )

## Properties

<b>Form</b>	Liquid
<b>Buffer</b>	PBS, 150mM NaCl, 50% Glycerol
<b>Preservative</b>	0.02% sodium azide
<b>Storage</b>	Store as concentrated solution. Centrifuge briefly prior to opening vial. For short-term storage (1-2 weeks), store at 4°C. For long-term storage, aliquot and store at -20°C or below. Avoid multiple freeze-thaw cycles.
<b>Concentration</b>	1 mg/ml (Please refer to the vial label for the specific concentration.)
<b>Immunogen</b>	A synthesized peptide derived from human DFNA5(Accession O60443), corresponding to amino acid residues L416-P438.
<b>Purification</b>	Purified by antigen-affinity chromatography From serum
<b>Conjugation</b>	Unconjugated

### Note

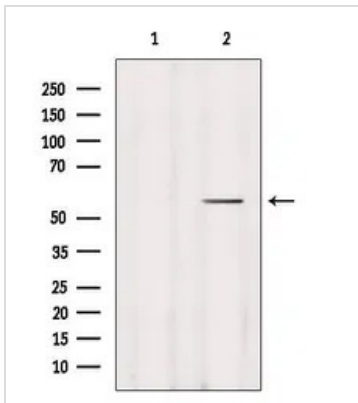
For laboratory research use only. Not for any clinical, therapeutic, or diagnostic use in humans or animals. Not for animal or human consumption.

Purchasers shall not, and agree not to enable third parties to, analyze, copy, reverse engineer or otherwise attempt to determine the structure or sequence of the product.



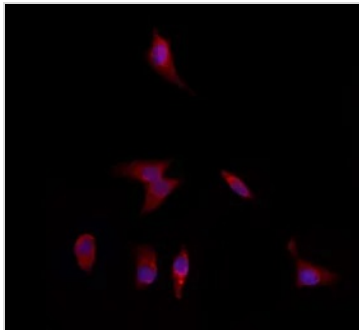
For full product information, images and publications, please visit our [website](#).

## DATA IMAGES



### GTx03443 WB Image

WB analysis of HeLa whole cell lysate using GTx03443 DFNA5 antibody. Lane 1 was treated with the blocking peptide.



### GTx03443 ICC/IF Image

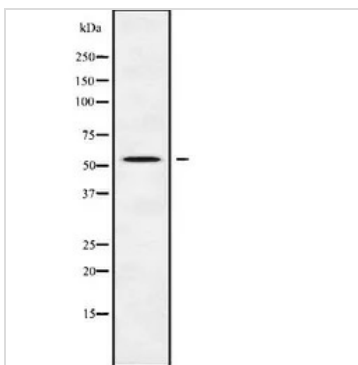
ICC/IF analysis of PFA-fixed HepG2 cells using GTx03443 DFNA5 antibody.

Red : Primary antibody

Blue : DAPI

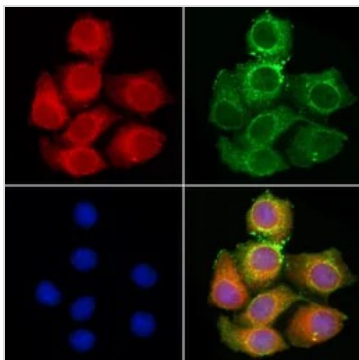
Permeabilization : 0.1% Triton X-100

Dilution : 1:200



### GTx03443 WB Image

WB analysis of Raw264.7 whole cell lysates using GTx03443 DFNA5 antibody.



### GTx03443 ICC/IF Image

ICC/IF analysis of PFA-fixed HepG2 cells using GTx03443 DFNA5 antibody.

Permeabilization : 0.1% Triton X-100

Red : Primary antibody

Green : beta tubulin

Blue : DAPI

Dilution : 1:200



For full product information, images and publications, please visit our [website](https://www.genetex.com).