

# EB1 antibody

**Cat. No. GTX03450**

<b>Host</b>	Rabbit
<b>Clonality</b>	Polyclonal
<b>Isotype</b>	IgG
<b>Applications</b>	WB, ICC/IF, IHC-P
<b>Reactivity</b>	Human, Rat

**Package**  
100 µl

## Applications

### Application Note

\*Optimal dilutions/concentrations should be determined by the researcher.

Suggested dilution	Recommended dilution
WB	1:500-1:2000
ICC/IF	1:100-1:500
IHC-P	1:50-1:200

Not tested in other applications.

**Calculated MW** 30 kDa. ( [Note](#) )

## Properties

<b>Form</b>	Liquid
<b>Buffer</b>	PBS, 150mM NaCl, 50% Glycerol
<b>Preservative</b>	0.02% sodium azide
<b>Storage</b>	Store as concentrated solution. Centrifuge briefly prior to opening vial. For short-term storage (1-2 weeks), store at 4°C. For long-term storage, aliquot and store at -20°C or below. Avoid multiple freeze-thaw cycles.
<b>Concentration</b>	1 mg/ml (Please refer to the vial label for the specific concentration.)
<b>Immunogen</b>	A synthesized peptide derived from human MAPRE1(Accession Q15691), corresponding to amino acid residues G176-N201.
<b>Purification</b>	Purified by antigen-affinity chromatography From serum
<b>Conjugation</b>	Unconjugated



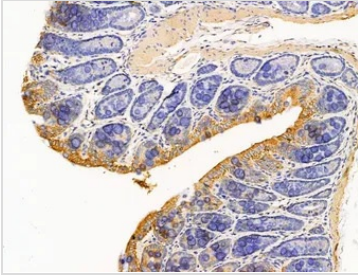
For full product information, images and publications, please visit our [website](#).

For laboratory research use only. Not for any clinical, therapeutic, or diagnostic use in humans or animals. Not for animal or human consumption.

## Note

Purchasers shall not, and agree not to enable third parties to, analyze, copy, reverse engineer or otherwise attempt to determine the structure or sequence of the product.

## DATA IMAGES

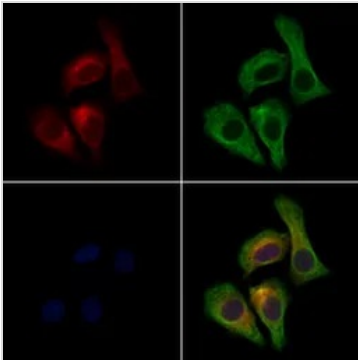


### GTX03450 IHC-P Image

IHC-P analysis of rat colorectal tissue using GTX03450 EB1 antibody.

Antigen retrieval : Heat mediated antigen retrieval step in citrate buffer was performed.

Dilution : 1:100



### GTX03450 ICC/IF Image

ICC/IF analysis of PFA-fixed HeLa cells using GTX03450 EB1 antibody.

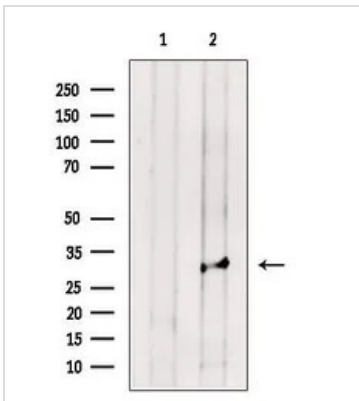
Red : Primary antibody

Green : beta tubulin

Blue : DAPI

Permeabilization : 0.1% Triton X-100

Dilution : 1:200



### GTX03450 WB Image

WB analysis of rat brain tissue lysate using GTX03450 EB1 antibody. The lane on the left was treated with blocking peptide.



For full product information, images and publications, please visit our [website](https://www.genetex.com).