

MKLP1 antibody

Cat. No. GTX03456

Host	Rabbit
Clonality	Polyclonal
Isotype	IgG
Applications	WB, ICC/IF, IHC-P
Reactivity	Human, Mouse

Package
100 µl

Applications

Application Note

*Optimal dilutions/concentrations should be determined by the researcher.

Suggested dilution	Recommended dilution
WB	1:500-1:2000
ICC/IF	1:100-1:500
IHC-P	1:50-1:200

Not tested in other applications.

Calculated MW 110 kDa. ([Note](#))

Properties

Form	Liquid
Buffer	PBS, 150mM NaCl, 50% Glycerol
Preservative	0.02% sodium azide
Storage	Store as concentrated solution. Centrifuge briefly prior to opening vial. For short-term storage (1-2 weeks), store at 4°C. For long-term storage, aliquot and store at -20°C or below. Avoid multiple freeze-thaw cycles.
Concentration	1 mg/ml (Please refer to the vial label for the specific concentration.)
Immunogen	A synthesized peptide derived from human KIF23(Accession Q02241), corresponding to amino acid residues A445-E466.
Purification	Purified by antigen-affinity chromatography From serum
Conjugation	Unconjugated

Note

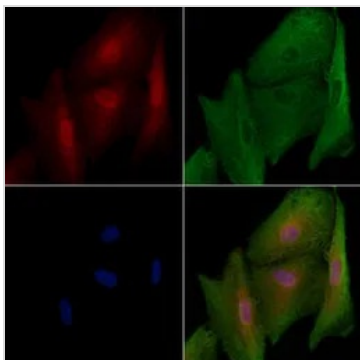
For laboratory research use only. Not for any clinical, therapeutic, or diagnostic use in humans or animals. Not for animal or human consumption.

Purchasers shall not, and agree not to enable third parties to, analyze, copy, reverse engineer or otherwise attempt to determine the structure or sequence of the product.



For full product information, images and publications, please visit our [website](#).

DATA IMAGES



GTx03456 ICC/IF Image

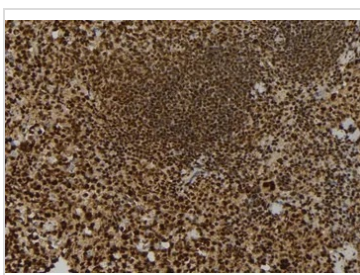
ICC/IF analysis of PFA-fixed A549 cells using GTx03456 MKLP1 antibody.

Permeabilization : 0.1% Triton X-100

Red : Primary antibody

Green : beta tubulin

Blue : DAPI

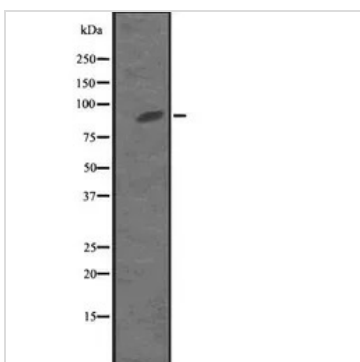


GTx03456 IHC-P Image

IHC-P analysis of mouse spleen tissue using GTx03456 MKLP1 antibody.

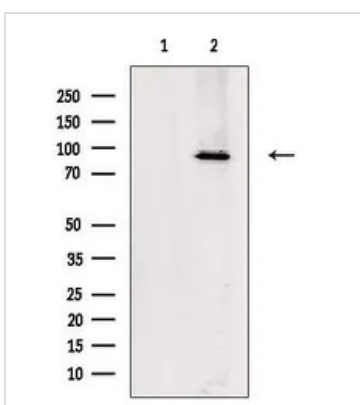
Antigen retrieval : Heat mediated antigen retrieval step in citrate buffer was performed.

Dilution : 1:100



GTx03456 WB Image

WB analysis of MKLP1 transfected 293T cell lysate using GTx03456 MKLP1 antibody. The lane on the left was treated with the antigen-specific peptide.



GTx03456 WB Image

WB analysis of HeLa whole cell lysate using GTx03456 MKLP1 antibody. The lane on the left was treated with blocking peptide.



For full product information, images and publications, please visit our [website](https://www.genetex.com).