

## gp340 antibody

Cat. No. GTX03459

Host	Rabbit
Clonality	Polyclonal
Isotype	IgG
Applications	WB
Reactivity	Human

Package  
100 µl

## Applications

## Application Note

\*Optimal dilutions/concentrations should be determined by the researcher.

Suggested dilution	Recommended dilution
WB	Assay dependent
Not tested in other applications.	

Calculated MW 261 kDa. ([Note](#))

## Properties

Form	Liquid
Buffer	PBS, 2% sucrose
Preservative	0.09% sodium azide
Storage	Store as concentrated solution. Centrifuge briefly prior to opening vial. For short-term storage (1-2 weeks), store at 4°C. For long-term storage, aliquot and store at -20°C or below. Avoid multiple freeze-thaw cycles.
Concentration	0.5 mg/ml (Please refer to the vial label for the specific concentration.)
Immunogen	The immunogen is a synthetic peptide directed towards the N terminal region of human DMBT1.
Purification	Purified by affinity chromatography
Conjugation	Unconjugated

## Note

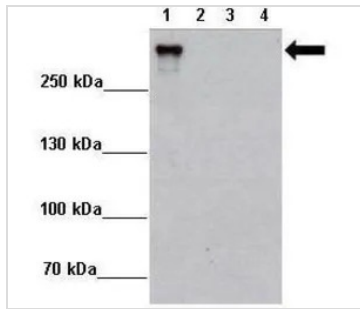
For laboratory research use only. Not for any clinical, therapeutic, or diagnostic use in humans or animals. Not for animal or human consumption.

Purchasers shall not, and agree not to enable third parties to, analyze, copy, reverse engineer or otherwise attempt to determine the structure or sequence of the product.



For full product information, images and publications, please visit our [website](#).

## DATA IMAGES



### GTx03459 WB Image

WB analysis of various sample lysates using GTx03459 gp340 antibody.

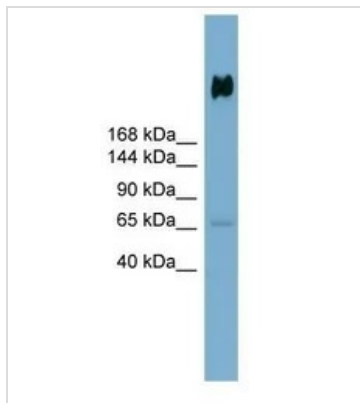
Lane 1 : 2µg MCF7-DMBT1 +Dox

Lane 2 : 2µg MCF7-DMBT1 -Dox

Lane 3 : 2µg MCF7-Ctrl+Dox

Lane 4 : 2µg MCF7-DMBT1 -Dox

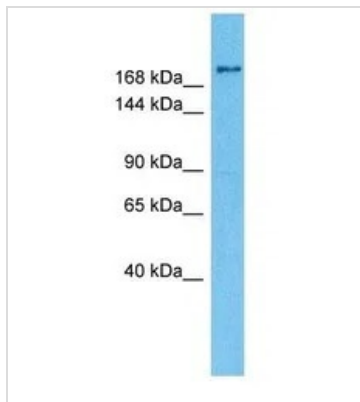
Dilution :\_x000D\_ 1:5000



### GTx03459 WB Image

WB analysis of human stomach tissue lysate using GTx03459 gp340 antibody.

Dilution : 0.2-1µg/ml



### GTx03459 WB Image

WB analysis of HepG2 whole cell lysate using GTx03459 gp340 antibody.

Dilution : 3µg/ml



For full product information, images and publications, please visit our [website](https://www.genetex.com).