

## GDF8 / Myostatin antibody

Cat. No. GTX03461

<b>Host</b>	Rabbit
<b>Clonality</b>	Polyclonal
<b>Isotype</b>	IgG
<b>Applications</b>	WB, IHC-P
<b>Reactivity</b>	Human, Mouse, Rat, Pig

Package  
100 µl

## Applications

## Application Note

\*Optimal dilutions/concentrations should be determined by the researcher.

Suggested dilution	Recommended dilution
WB	1:500-1:2000
IHC-P	1:100-1:500

Not tested in other applications.

**Calculated MW** 43 kDa. ([Note](#))

## Properties

<b>Form</b>	Liquid
<b>Buffer</b>	10mM TBS, 1% BSA, 50% Glycerol
<b>Preservative</b>	0.03% Proclin300
<b>Storage</b>	Store as concentrated solution. Centrifuge briefly prior to opening vial. For short-term storage (1-2 weeks), store at 4°C. For long-term storage, aliquot and store at -20°C or below. Avoid multiple freeze-thaw cycles.
<b>Concentration</b>	1 mg/ml (Please refer to the vial label for the specific concentration.)
<b>Immunogen</b>	KLH conjugated synthetic peptide derived from human GDF8 (281-375).
<b>Purification</b>	Protein A purified
<b>Conjugation</b>	Unconjugated

## Note

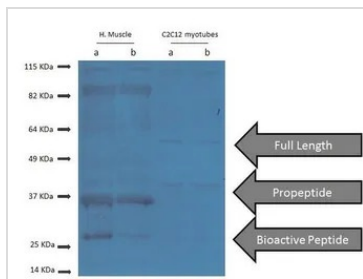
For laboratory research use only. Not for any clinical, therapeutic, or diagnostic use in humans or animals. Not for animal or human consumption.

Purchasers shall not, and agree not to enable third parties to, analyze, copy, reverse engineer or otherwise attempt to determine the structure or sequence of the product.



For full product information, images and publications, please visit our [website](#).

DATA IMAGES



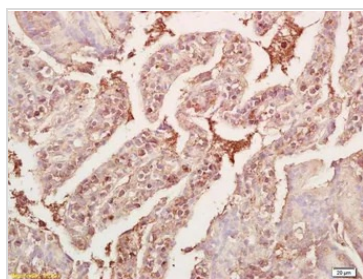
**GTX03461 WB Image**

WB analysis of various sample lysates using GTX03461 GDF8 / Myostatin antibody.

Lanes 1 and 2 : human muscle tissue lysate

Lanes 3 and 4 : C2C12 whole cell lysate

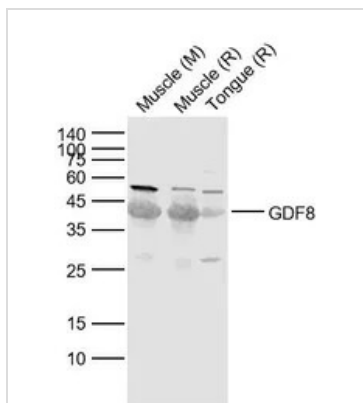
Dilution : 1:1000



**GTX03461 IHC-P Image**

IHC-P analysis of mouse small intestine tissue using GTX03461 GDF8 / Myostatin antibody.

Dilution : 1:200



**GTX03461 WB Image**

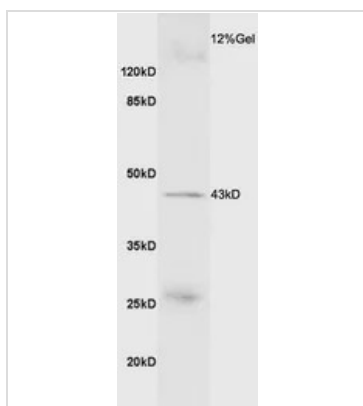
WB analysis of various sample lysates using GTX03461 GDF8 / Myostatin antibody.

Lane 1 : Mouse Muscle tissue lysate

Lane 2 : Rat Muscle tissue lysate

Lane 3 : Rat Tongue tissue lysate

Dilution : 1:1000



**GTX03461 WB Image**

WB analysis of mouse skeletal muscle lysate using GTX03461 GDF8 / Myostatin antibody.

Dilution : 1:200



For full product information, images and publications, please visit our [website](#).