

TGF beta antibody

Cat. No. GTX03464

Host	Rabbit
Clonality	Polyclonal
Isotype	IgG
Applications	WB, ICC/IF, IHC-P, FCM
Reactivity	Human, Mouse, Rat, Rabbit, Sheep

Package
100 µl

Applications

Application Note

*Optimal dilutions/concentrations should be determined by the researcher.

Suggested dilution	Recommended dilution
WB	1:500-1:2000
ICC/IF	1:100-1:500
IHC-P	1:100-1:500
FCM	1:50

Not tested in other applications.

Properties

Form	Liquid
Buffer	10mM TBS, 1% BSA, 50% Glycerol
Preservative	0.03% Proclin300
Storage	Store as concentrated solution. Centrifuge briefly prior to opening vial. For short-term storage (1-2 weeks), store at 4°C. For long-term storage, aliquot and store at -20°C or below. Avoid multiple freeze-thaw cycles.
Concentration	1 mg/ml (Please refer to the vial label for the specific concentration.)
Immunogen	KLH conjugated synthetic peptide derived from human TGF Beta 1 (301-350).
Purification	Protein A purified
Conjugation	Unconjugated

Note

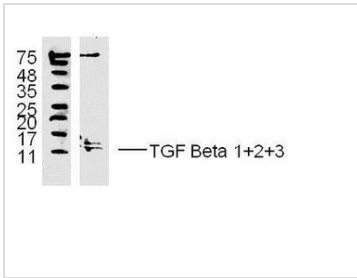
For laboratory research use only. Not for any clinical, therapeutic, or diagnostic use in humans or animals. Not for animal or human consumption.

Purchasers shall not, and agree not to enable third parties to, analyze, copy, reverse engineer or otherwise attempt to determine the structure or sequence of the product.



For full product information, images and publications, please visit our [website](#).

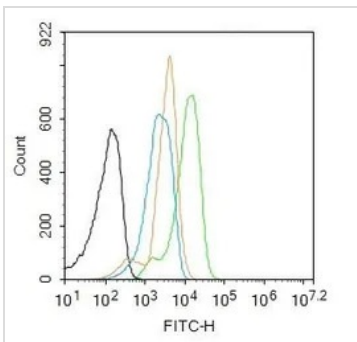
DATA IMAGES



GTx03464 WB Image

WB analysis of MDA-MB-231 whole cell lysate using GTx03464 TGF beta antibody.

Dilution : 1:300



GTx03464 FCM Image

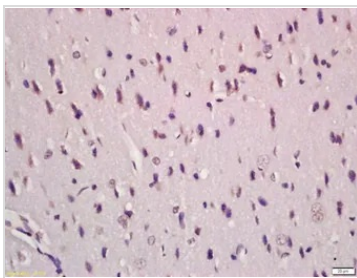
FACS analysis of 4% PFA-fixed K562 cells using GTx03464 TGF beta antibody. Acquisitions of 20,000 events were performed.

Green : Primary antibody

Orange : Isotype control

Permeabilization : 0.1% PBST for 20 min at room temperature

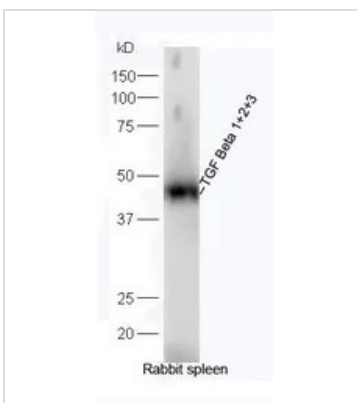
Dilution : 1:50



GTx03464 IHC-P Image

IHC-P analysis of rat brain tissue using GTx03464 TGF beta antibody.

Dilution : 1:200



GTx03464 WB Image

WB analysis of rabbit spleen tissue lysate using GTx03464 TGF beta antibody.

Dilution : 1:300



For full product information, images and publications, please visit our [website](https://www.genetex.com).