

# DLL1 antibody

**Cat. No. GTX03469**

<b>Host</b>	Rabbit
<b>Clonality</b>	Polyclonal
<b>Isotype</b>	IgG
<b>Application</b>	WB, ICC/IF, IHC-P, FACS, ELISA
<b>Reactivity</b>	Human, Mouse, Rat, Monkey

**Package**  
100 µg

## APPLICATION

### Application Note

\*Optimal dilutions/concentrations should be determined by the researcher.

Suggested dilution	Recommended dilution
WB	0.1-0.25µg/ml
ICC/IF	4µg/ml
IHC-P	0.5-1µg/ml
FACS	1-3µg/1x10 <sup>6</sup> cells
ELISA	0.1-0.5µg/ml

Not tested in other applications.

**Calculated MW** 78 kDa. ( [Note](#) )

## PROPERTIES

<b>Form</b>	Liquid
<b>Buffer</b>	4mg Trehalose, 0.9mg NaCl, 0.2mg Na <sub>2</sub> HPO <sub>4</sub>
<b>Preservative</b>	0.01mg sodium azide
<b>Storage</b>	Store as concentrated solution. Centrifuge briefly prior to opening vial. For short-term storage (1-2 weeks), store at 4°C. For long-term storage, aliquot and store at -20°C or below. Avoid multiple freeze-thaw cycles.
<b>Concentration</b>	0.5 mg/ml (Please refer to the vial label for the specific concentration.)
<b>Immunogen</b>	E.coli-derived human DLL1 recombinant protein (Position: Q18-K239).
<b>Purification</b>	Purified by antigen-affinity chromatography
<b>Conjugation</b>	Unconjugated

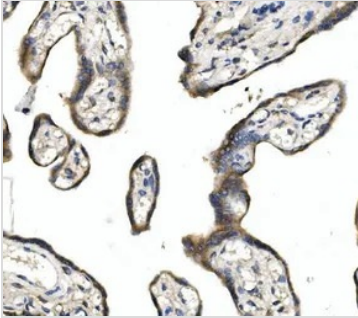


For full product information, images and publications, please visit our [website](#).

For laboratory research use only. Not for any clinical, therapeutic, or diagnostic use in humans or animals. Not for animal or human consumption.

**Note**

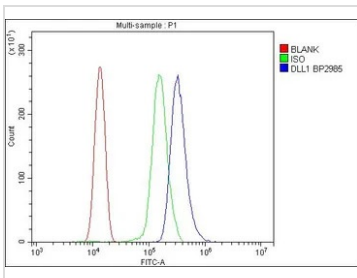
Purchasers shall not, and agree not to enable third parties to, analyze, copy, reverse engineer or otherwise attempt to determine the structure or sequence of the product.

**DATA IMAGES**

**GTX03469 IHC-P Image**

IHC-P analysis of human placenta tissue using GTX03469 DLL1 antibody.

Antigen retrieval : Heat mediated antigen retrieval was performed in EDTA buffer (pH 8.0, epitope retrieval solution).

Dilution : 1 µg/ml


**GTX03469 FACS Image**

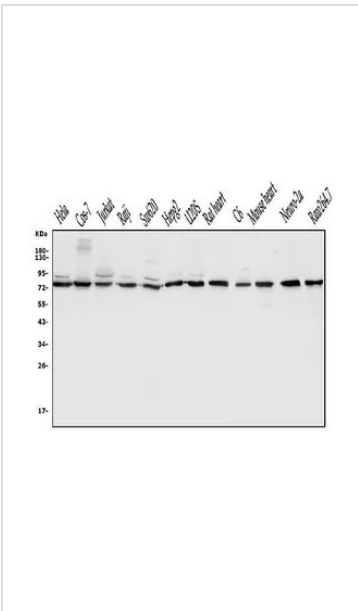
FACS analysis of THP-1 cells using GTX03469 DLL1 antibody.

Blue : Primary antibody

Green : Isotype control

Red : Unlabelled cell

Antibody amount : 1 µg/1x10<sup>6</sup> cells


**GTX03469 WB Image**

WB analysis of various sample lysates using GTX03469 DLL1 antibody.

Lane 1 : HeLa whole cell lysate

Lane 2 : COS-7 whole cell lysate

Lane 3 : Jurkat whole cell lysate

Lane 4 : Raji whole cell lysate

Lane 5 : SW620 whole cell lysate

Lane 6 : HepG2 whole cell lysate

Lane 7 : U2OS whole cell lysate

Lane 8 : rat heart tissue lysate

Lane 9 : C6 whole cell lysate

Lane 10 : mouse heart tissue lysate

Lane 11 : Neuro-2a whole cell lysate

Lane 12 : RAW264.7 whole cell lysate

Dilution : 0.25 µg/ml

Loading : 50µg per lane



For full product information, images and publications, please visit our [website](http://www.genetex.com).