

Actin Gamma 1 antibody [2A3]

Cat. No. GTX03493

Host	Mouse
Clonality	Monoclonal
Isotype	IgG2b
Applications	WB, ICC/IF, IHC-P
Reactivity	Human, Mouse, Rat, Monkey

Package
100 µg

Applications

Application Note

*Optimal dilutions/concentrations should be determined by the researcher.

Suggested dilution	Recommended dilution
WB	1:100 - 1:1000
ICC/IF	Assay dependent
IHC-P	Assay dependent

Not tested in other applications.

Calculated MW 42 kDa. ([Note](#))

Product Note This antibody is highly specific for actin gamma and does not react with other actin isoforms (Dugina et al. 2009).

Properties

Form	Liquid
Buffer	PBS
Preservative	0.09% Sodium azide
Storage	Store as concentrated solution. Centrifuge briefly prior to opening vial. For short-term storage (1-2 weeks), store at 4°C. For long-term storage, aliquot and store at -20°C or below. Avoid multiple freeze-thaw cycles.
Concentration	1 mg/ml (Please refer to the vial label for the specific concentration.)
Immunogen	Synthetic peptide corresponding to the N-terminal nonapeptide of gamma-cytoplasmic actin, coupled to KLH.
Purification	Protein A purified From tissue culture supernatant
Conjugation	Unconjugated



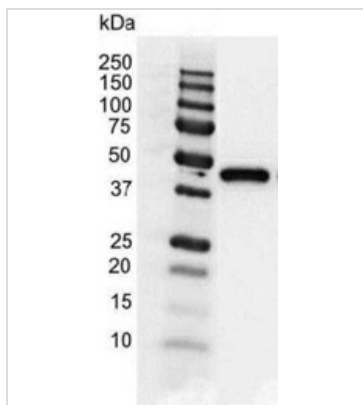
For full product information, images and publications, please visit our [website](#).

For laboratory research use only. Not for any clinical, therapeutic, or diagnostic use in humans or animals. Not for animal or human consumption.

Note

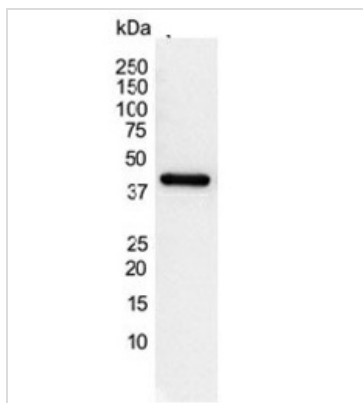
Purchasers shall not, and agree not to enable third parties to, analyze, copy, reverse engineer or otherwise attempt to determine the structure or sequence of the product.

DATA IMAGES



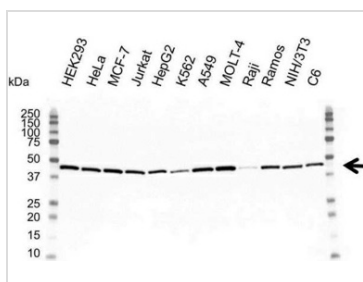
GTX03493 WB Image

WB analysis of COS-7 cell lysate using GTX03493 Actin Gamma 1 antibody [2A3].



GTX03493 WB Image

WB analysis of NIH3T3 cell lysate using GTX03493 Actin Gamma 1 antibody [2A3].



GTX03493 WB Image

WB analysis of various sample lysates using GTX03493 Actin Gamma 1 antibody [2A3].



For full product information, images and publications, please visit our [website](#).