

Mouse Inhibin beta A protein, His tag (active)

Cat. No. GTX03544-pro

Applications	Binding Assay, Functional Assay
Species	Mouse

Package
50 µg

Applications

Application Note

1. Immobilized GTX03624-pro human Activin Receptor Type IIB (ECD) protein, human IgG Fc tag at 10 µg/mL (100 µL/well) can bind biotinylated GTX03544-pro mouse Inhibin beta A protein, His tag (active), the EC₅₀ of biotinylated GTX03544-pro is 0.161 µg/mL.
2. Immobilized GTX03544-pro mouse Inhibin beta A protein, His tag (active) at 10 µg/mL (100 µL/well) can bind human Follistatin protein, the EC₅₀ of human Follistatin protein is 0.39 µg/mL.
3. Measured by its ability to inhibit proliferation of MPC-11 cells. The ED₅₀ for this effect is typically 0.8-4 µg/mL.

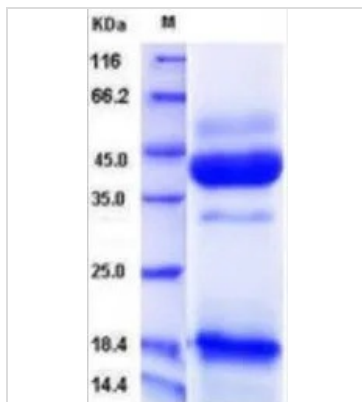
Observed MW (kDa) 18, 47 kDa.

Properties

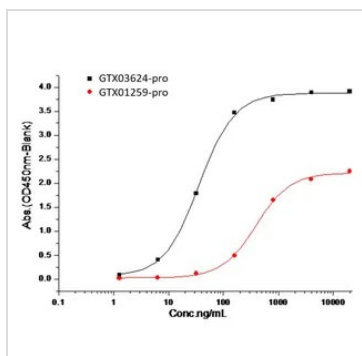
Form	Lyophilized powder
Buffer	Batch dependent (please contact us for details)
Storage	Store at -20°C or below. After reconstitution, keep as concentrated solution. Aliquot and store at -20°C or below. Avoid freeze-thaw cycles.
Region/Sequence	Full-length protein, C-terminal His tag; Met1-Ser424 (NP_032406.1)
Expression System	HEK293 Cells
Purity	> 88% by SDS-PAGE.
Endotoxin	< 1.0 EU/µg (determined by LAL method)
Conjugation	Unconjugated
Note	<p>For laboratory research use only. Not for any clinical, therapeutic, or diagnostic use in humans or animals. Not for animal or human consumption.</p> <p>Purchasers shall not, and agree not to enable third parties to, analyze, copy, reverse engineer or otherwise attempt to determine the structure or sequence of the product.</p>



For full product information, images and publications, please visit our [website](#).

DATA IMAGES

GTX03544-pro Image

SDS-PAGE of GTX03544-pro mouse Inhibin beta A protein, His tag (active).

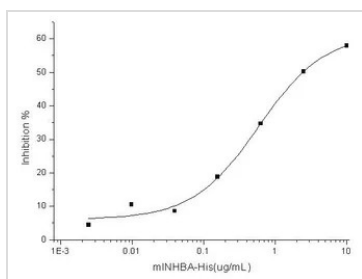

GTX03544-pro Binding Assay Image

The protein binding activity was measured in a functional ELISA analysis of immobilized GTX03624-pro human Activin Receptor Type IIB (ECD) protein, human IgG Fc tag which can bind to GTX03544-pro mouse Inhibin beta A protein, His tag (active). The protein binding activity was measured in a functional ELISA analysis of GTX01259-pro human Follistatin protein, human IgG1 Fc tag (active) which can bind to immobilized GTX03544-pro mouse Inhibin beta A protein, His tag (active).

GTX03544-pro EC_{50} : 0.161 μ g/mL (black), 10 μ g/mL (100 μ L/well) (red)

GTX03624-pro : 10 μ g/mL (100 μ L/well)

GTX01259-pro EC_{50} : 0.39 μ g/mL


GTX03544-pro Functional Assay Image

The protein activity of GTX03544-pro mouse Inhibin beta A protein, His tag (active) was measured by its ability to inhibit proliferation of MPC-11 cells.

EC_{50} : 0.8-4 μ g/mL



For full product information, images and publications, please visit our [website](http://www.genetex.com).