

Mouse Inhibin beta A protein, His tag (active)

Cat. No. GTX03544-pro

Applications	Binding Assay, Functional Assay
Species	Mouse

Package
50 µg

Applications

Application Note

1. Immobilized GTX03624-pro human Activin Receptor Type IIB (ECD) protein, human IgG Fc tag at 10 µg/mL (100 µL/well) can bind biotinylated GTX03544-pro mouse Inhibin beta A protein, His tag (active), the EC₅₀ of biotinylated GTX03544-pro is 0.161 µg/mL.
2. Immobilized GTX03544-pro mouse Inhibin beta A protein, His tag (active) at 10 µg/mL (100 µL/well) can bind human Follistatin protein, the EC₅₀ of human Follistatin protein is 0.39 µg/mL.
3. Measured by its ability to inhibit proliferation of MPC-11 cells. The ED₅₀ for this effect is typically 0.8-4 µg/mL.

Observed MW (kDa) 18, 47 kDa.

Properties

Form	Lyophilized powder
Buffer	Batch dependent (please contact us for details)
Storage	Store at -20°C or below. After reconstitution, keep as concentrated solution. Aliquot and store at -20°C or below. Avoid freeze-thaw cycles.
Region/Sequence	Full-length protein, C-terminal His tag; Met1-Ser424 (NP_032406.1)
Expression System	HEK293 Cells
Purity	> 88% by SDS-PAGE.
Endotoxin	< 1.0 EU/µg (determined by LAL method)
Conjugation	Unconjugated

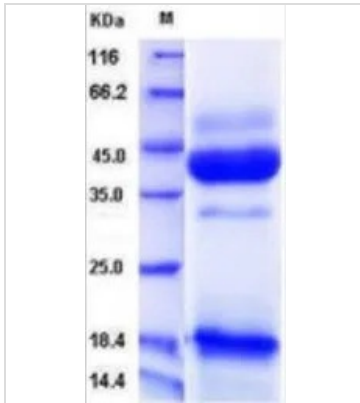
Note

For laboratory research use only. Not for any clinical, therapeutic, or diagnostic use in humans or animals. Not for animal or human consumption.

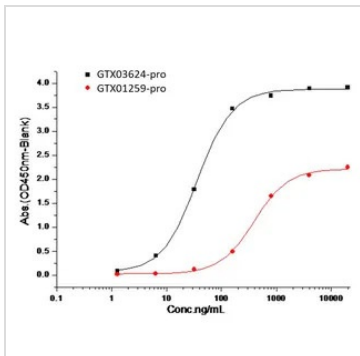
Purchasers shall not, and agree not to enable third parties to, analyze, copy, reverse engineer or otherwise attempt to determine the structure or sequence of the product.



For full product information, images and publications, please visit our [website](#).

DATA IMAGES

GTX03544-pro Image

SDS-PAGE of GTX03544-pro mouse Inhibin beta A protein, His tag (active).

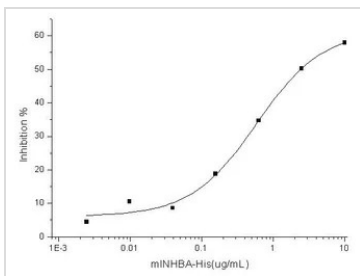

GTX03544-pro Binding Assay Image

The protein binding activity was measured in a functional ELISA analysis of immobilized GTX03624-pro human Activin Receptor Type IIB (ECD) protein, human IgG Fc tag which can bind to GTX03544-pro mouse Inhibin beta A protein, His tag (active). The protein binding activity was measured in a functional ELISA analysis of GTX01259-pro human Follistatin protein, human IgG1 Fc tag (active) which can bind to immobilized GTX03544-pro mouse Inhibin beta A protein, His tag (active).

GTX03544-pro EC_{50} : 0.161 μ g/mL (black), 10 μ g/mL (100 μ L/well) (red)

GTX03624-pro : 10 μ g/mL (100 μ L/well)

GTX01259-pro EC_{50} : 0.39 μ g/mL


GTX03544-pro Functional Assay Image

The protein activity of GTX03544-pro mouse Inhibin beta A protein, His tag (active) was measured by its ability to inhibit proliferation of MPC-11 cells.

EC_{50} : 0.8-4 μ g/mL



For full product information, images and publications, please visit our [website](http://www.genetex.com).