

## Mouse Inhibin beta A protein, His tag (active)

Cat. No. GTX03544-pro

|              |                                 |
|--------------|---------------------------------|
| Applications | Binding Assay, Functional Assay |
| Species      | Mouse                           |

Package  
50 µg

## Applications

## Application Note

1. Immobilized GTX03624-pro human Activin Receptor Type IIB (ECD) protein, human IgG Fc tag at 10 µg/mL (100 µL/well) can bind biotinylated GTX03544-pro mouse Inhibin beta A protein, His tag (active), the EC<sub>50</sub> of biotinylated GTX03544-pro is 0.161 µg/mL.
2. Immobilized GTX03544-pro mouse Inhibin beta A protein, His tag (active) at 10 µg/mL (100 µL/well) can bind human Follistatin protein, the EC<sub>50</sub> of human Follistatin protein is 0.39 µg/mL.
3. Measured by its ability to inhibit proliferation of MPC-11 cells. The ED<sub>50</sub> for this effect is typically 0.8-4 µg/mL.

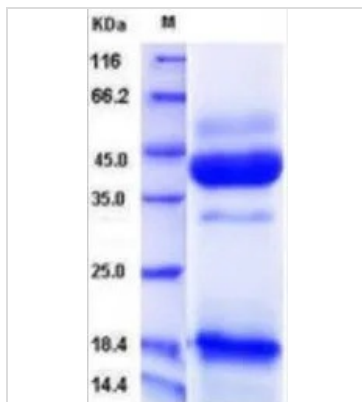
Observed MW (kDa) 18, 47 kDa.

## Properties

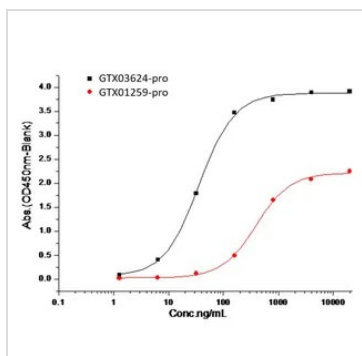
|                   |   |
|-------------------|---|
| Form              | Lyophilized powder  |
| Buffer            | Batch dependent (please contact us for details)   |
| Storage           | Store at -20°C or below. After reconstitution, keep as concentrated solution. Aliquot and store at -20°C or below. Avoid freeze-thaw cycles.  |
| Region/Sequence   | Full-length protein, C-terminal His tag; Met1-Ser424 (NP_032406.1)  |
| Expression System | HEK293 Cells  |
| Purity            | > 88% by SDS-PAGE.  |
| Endotoxin         | < 1.0 EU/µg (determined by LAL method)  |
| Conjugation       | Unconjugated  |
| Note              | <p>For laboratory research use only. Not for any clinical, therapeutic, or diagnostic use in humans or animals. Not for animal or human consumption.</p> <p>Purchasers shall not, and agree not to enable third parties to, analyze, copy, reverse engineer or otherwise attempt to determine the structure or sequence of the product.</p> |



For full product information, images and publications, please visit our [website](#).

**DATA IMAGES**

**GTX03544-pro Image**

SDS-PAGE of GTX03544-pro mouse Inhibin beta A protein, His tag (active).

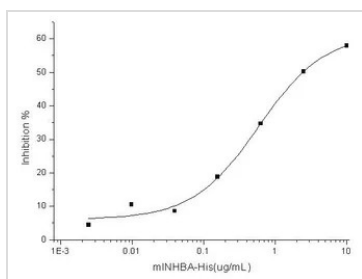

**GTX03544-pro Binding Assay Image**

The protein binding activity was measured in a functional ELISA analysis of immobilized GTX03624-pro human Activin Receptor Type IIB (ECD) protein, human IgG Fc tag which can bind to GTX03544-pro mouse Inhibin beta A protein, His tag (active). The protein binding activity was measured in a functional ELISA analysis of GTX01259-pro human Follistatin protein, human IgG1 Fc tag (active) which can bind to immobilized GTX03544-pro mouse Inhibin beta A protein, His tag (active).

GTX03544-pro  $EC_{50}$  : 0.161  $\mu$ g/mL (black), 10  $\mu$ g/mL (100  $\mu$ L/well) (red)

GTX03624-pro : 10  $\mu$ g/mL (100  $\mu$ L/well)

GTX01259-pro  $EC_{50}$  : 0.39  $\mu$ g/mL


**GTX03544-pro Functional Assay Image**

The protein activity of GTX03544-pro mouse Inhibin beta A protein, His tag (active) was measured by its ability to inhibit proliferation of MPC-11 cells.

$EC_{50}$  : 0.8-4  $\mu$ g/mL



For full product information, images and publications, please visit our [website](http://www.genetex.com).