

Mono AEC/Plus

Cat. No. GTX03600

Application IHC-P**Package**
30 ml

PRODUCT

Summary

Mono AEC/Plus is a single, highly stable, AEC chromogen/substrate liquid solution. When used in conjunction with immunoperoxidase detection systems, AEC produces a red colored end product, yielding strong contrast when combined with a blue hematoxylin counterstain. AEC has been well accepted among histotechnologists because it is less chemically hazardous than DAB. Specimens stained using Mono AEC/Plus cannot be dehydrated in ethanol and must be mounted in an aqueous-based mounting medium such as CC/Mount (GTX03598).

PROPERTIES

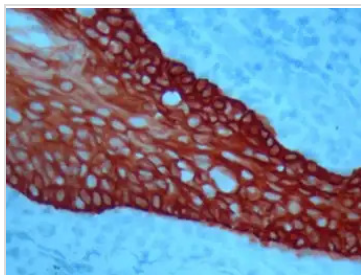
Form Liquid**Storage** Store at 4°C. Protect from light.**Conjugation** Unconjugated

Note

For laboratory research use only. Not for any clinical, therapeutic, or diagnostic use in humans or animals. Not for animal or human consumption.

Purchasers shall not, and agree not to enable third parties to, analyze, copy, reverse engineer or otherwise attempt to determine the structure or sequence of the product.

DATA IMAGES



GTX03600 IHC-P Image

IHC-P analysis of human tonsil tissue using high Cytokeratin H.M.W antibody with GTX03600 Mono AEC/Plus.



For full product information, images and publications, please visit our [website](#).