

PermaRed/AP-AutoPlus

Cat. No. GTX03601
Applications

IHC-P, IHC, ISH

Package

30 ml

PRODUCT
Summary

PermaRed/AP-Auto/Plus produces a red color, ranging from pink to brilliant dark red, depending on the signal intensity. It is insoluble in organic solvents; therefore sections can be dehydrated in alcohol, cleared in xylene (or a xylene-substitute), and permanently mounted.

Properties
Form

Liquid

Storage

Store at 4°C. Protect from light.

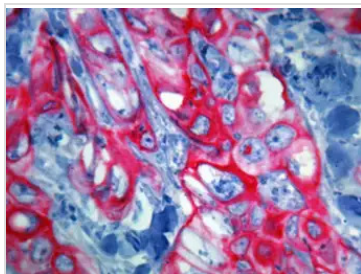
Conjugation

Unconjugated

Note

For laboratory research use only. Not for any clinical, therapeutic, or diagnostic use in humans or animals. Not for animal or human consumption.

Purchasers shall not, and agree not to enable third parties to, analyze, copy, reverse engineer or otherwise attempt to determine the structure or sequence of the product.

DATA IMAGES

GTX03601 IHC-P Image

IHC-P analysis of human squamous cell carcinoma using GTX17133 Cytokeratin 5 + 6 antibody [D5/16 B4] with GTX03601 PermaRed/AP-AutoPlus.



For full product information, images and publications, please visit our [website](#).