

# Nuclear Fast Red

**Cat. No. GTX03635**

**Applications** IHC-P

**Package**  
100 ml

## PRODUCT

### Summary

GTX03635 Nclear Fast Red is intended for use in the histologic demonstration of nuclear staining. This staining technique is used to make the critical distinction between a normal nucleus and an abnormal one. When used as a counterstain in immunohistochemical procedures, Nuclear Fast Red is compatible with most commonly used chromogens including DBS HRP-Yellow, HRP-Green, HRP-Black, and DAB.

## Properties

**Form** Liquid

**Storage** Store at room temperature.

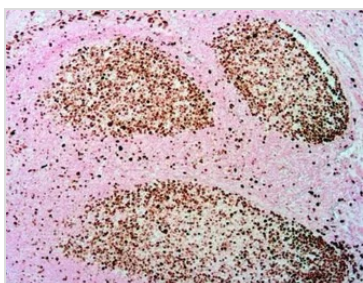
**Conjugation** Unconjugated

### Note

For laboratory research use only. Not for any clinical, therapeutic, or diagnostic use in humans or animals. Not for animal or human consumption.

Purchasers shall not, and agree not to enable third parties to, analyze, copy, reverse engineer or otherwise attempt to determine the structure or sequence of the product.

## DATA IMAGES



### GTX03635 IHC-P Image

IHC-P analysis of human tonsil tissue using Ki67 antibody with GTX03635 Nuclear Fast Red.



For full product information, images and publications, please visit our [website](#).