

SLC47A1 antibody

Cat. No. GTX03645

Host	Rabbit
Clonality	Polyclonal
Isotype	IgG
Applications	WB
Reactivity	Mouse, Rat

Package

50 µl

Applications

Application Note

*Optimal dilutions/concentrations should be determined by the researcher.

Suggested dilution	Recommended dilution
WB	1:200-1:1000

Not tested in other applications.

Calculated MW 62 kDa. ([Note](#))

Product Note We do not recommend use of this product for Human samples.

Properties

Form	Liquid
Buffer	PBS, 1% BSA
Preservative	0.05% sodium azide
Storage	Store as concentrated solution. Centrifuge briefly prior to opening vial. For short-term storage (1-2 weeks), store at 4°C. For long-term storage, aliquot and store at -20°C or below. Avoid multiple freeze-thaw cycles.
Concentration	0.8 mg/ml (Please refer to the vial label for the specific concentration.)
Immunogen	Peptide (C)ESHGEIMMTDLEKK, corresponding to amino acid residues 496-509 of mouse SLC47A1 (Accession Q8K0H1, 5th intracellular loop).
Purification	Purified by antigen-affinity chromatography
Conjugation	Unconjugated

Note

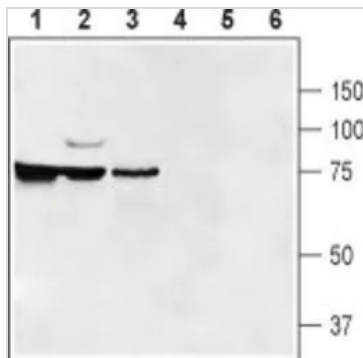
For laboratory research use only. Not for any clinical, therapeutic, or diagnostic use in humans or animals. Not for animal or human consumption.

Purchasers shall not, and agree not to enable third parties to, analyze, copy, reverse engineer or otherwise attempt to determine the structure or sequence of the product.



For full product information, images and publications, please visit our [website](#).

DATA IMAGES



GTx03645 WB Image

WB analysis of rat kidney (lanes 1 and 4), mouse brain (lanes 2 and 5), and rat testis (lanes 3 and 6) tissue lysates using GTx03645 SLC47A1 antibody.

Lane 1-3 : Primary antibody

Lane 4-6 : Primary antibody preincubated with immunogen peptide

Dilution : 1:200



For full product information, images and publications, please visit our [website](#).