

# MUS81 antibody

**Cat. No. GTX03656**

<b>Host</b>	Rabbit
<b>Clonality</b>	Polyclonal
<b>Isotype</b>	IgG
<b>Applications</b>	WB, ELISA
<b>Reactivity</b>	Human, Mouse, Rat

**Package**  
100 µg

## Applications

### Application Note

\*Optimal dilutions/concentrations should be determined by the researcher.

Suggested dilution	Recommended dilution
WB	0.25-0.5 µg/ml
ELISA	0.1-0.5 µg/ml

Not tested in other applications.

**Calculated MW** 61 kDa. ( [Note](#) )

## Properties

<b>Form</b>	Liquid
<b>Buffer</b>	4mg Trehalose, 0.9mg NaCl, 0.2mg Na <sub>2</sub> HPO <sub>4</sub>
<b>Preservative</b>	No preservatives
<b>Storage</b>	Store as concentrated solution. Centrifuge briefly prior to opening vial. For short-term storage (1-2 weeks), store at 4°C. For long-term storage, aliquot and store at -20°C or below. Avoid multiple freeze-thaw cycles.
<b>Concentration</b>	0.5 mg/ml (Please refer to the vial label for the specific concentration.)
<b>Immunogen</b>	E.coli-derived human MUS81 recombinant protein (Position: H283-R483).
<b>Purification</b>	Purified by antigen-affinity chromatography
<b>Conjugation</b>	Unconjugated

### Note

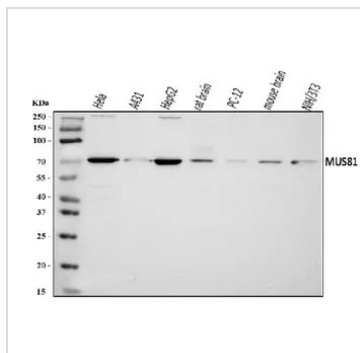
For laboratory research use only. Not for any clinical, therapeutic, or diagnostic use in humans or animals. Not for animal or human consumption.

Purchasers shall not, and agree not to enable third parties to, analyze, copy, reverse engineer or otherwise attempt to determine the structure or sequence of the product.



For full product information, images and publications, please visit our [website](#).

## DATA IMAGES



### GTX03656 WB Image

WB analysis of various sample lysates using GTX03656 MUS81 antibody.

- Lane 1 : HeLa whole cell lysates
- Lane 2 : A431 whole cell lysates
- Lane 3 : HepG2 whole cell lysates
- Lane 4 : rat brain tissue lysates
- Lane 5 : PC-12 whole cell lysates
- Lane 6 : brain tissue lysates
- Lane 7 : NIH/3T3 whole cell lysates



For full product information, images and publications, please visit our [website](https://www.genetex.com).