

## SHP1 (phospho Tyr564) antibody

Cat. No. GTX03665

Host	Rabbit
Clonality	Polyclonal
Isotype	IgG
Applications	WB
Reactivity	Human, Mouse

Package  
100 µl

## Applications

## Application Note

\*Optimal dilutions/concentrations should be determined by the researcher.

Suggested dilution	Recommended dilution
WB	1:500-1:2000

Not tested in other applications.

Calculated MW 68 kDa. ( [Note](#) )

## Properties

Form	Liquid
Buffer	PBS, 50% Glycerol
Preservative	0.02% sodium azide
Storage	Store as concentrated solution. Centrifuge briefly prior to opening vial. For short-term storage (1-2 weeks), store at 4°C. For long-term storage, aliquot and store at -20°C or below. Avoid multiple freeze-thaw cycles.
Concentration	Batch dependent (Please refer to the vial label for the specific concentration.)
Immunogen	A synthetic phosphorylated peptide around Y564 of human PTPN6 (NP_002822.2).
Purification	Purified by affinity chromatography
Conjugation	Unconjugated

## Note

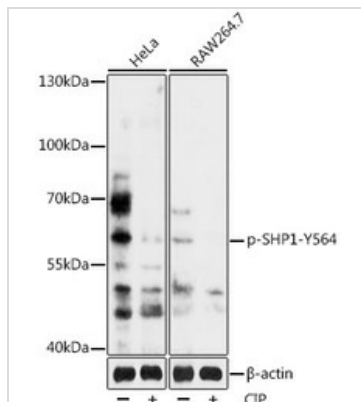
For laboratory research use only. Not for any clinical, therapeutic, or diagnostic use in humans or animals. Not for animal or human consumption.

Purchasers shall not, and agree not to enable third parties to, analyze, copy, reverse engineer or otherwise attempt to determine the structure or sequence of the product.



For full product information, images and publications, please visit our [website](#).

## DATA IMAGES



### GTX03665 WB Image

WB analysis of HeLa and Raw264.7 cell lysates treated by CIP at 37°C for 1 hour using GTX03665 SHP1 (phospho Tyr564) antibody. The signal is developed using an Enhanced Chemiluminescent detection (ECL) kit.

Dilution : 1:2000

Loading : 25µg per lanes



For full product information, images and publications, please visit our [website](https://www.genetex.com).