

## Rab11A antibody [4H9]

Cat. No. GTX03669

<b>Host</b>	Mouse
<b>Clonality</b>	Monoclonal
<b>Isotype</b>	IgG2b
<b>Applications</b>	WB, ICC/IF, IHC-P, FCM
<b>Reactivity</b>	Human, Mouse, Rat

Package  
100 µg

## Applications

## Application Note

\*Optimal dilutions/concentrations should be determined by the researcher.

Suggested dilution	Recommended dilution
WB	0.25-0.5 µg/ml
ICC/IF	5 µg/ml
IHC-P	2-5 µg/ml
FCM	1-3 µg/1x10 <sup>6</sup> cells

Not tested in other applications.

**Calculated MW** 24 kDa. ([Note](#))

## Properties

<b>Form</b>	Liquid
<b>Buffer</b>	4mg Trehalose, 0.9mg NaCl, 0.2mg Na <sub>2</sub> HPO <sub>4</sub>
<b>Preservative</b>	No preservatives
<b>Storage</b>	Store as concentrated solution. Centrifuge briefly prior to opening vial. For short-term storage (1-2 weeks), store at 4°C. For long-term storage, aliquot and store at -20°C or below. Avoid multiple freeze-thaw cycles.
<b>Concentration</b>	0.5 mg/ml (Please refer to the vial label for the specific concentration.)
<b>Immunogen</b>	A synthetic peptide corresponding to a sequence at the C-terminus of human Rab11A (171-211aa EIYRIVSQKQMSDRRENDMSPSNVPIHVPTTENKPKVQ), identical to the related mouse and rat sequences.
<b>Purification</b>	Purified by antigen-affinity chromatography
<b>Conjugation</b>	Unconjugated

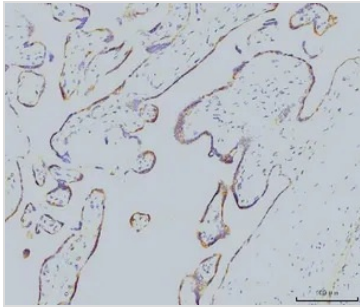


For full product information, images and publications, please visit our [website](#).

For laboratory research use only. Not for any clinical, therapeutic, or diagnostic use in humans or animals. Not for animal or human consumption.

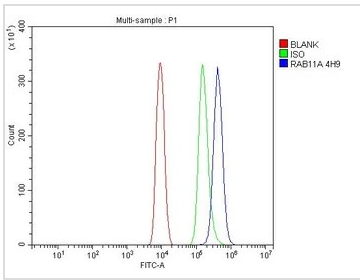
**Note**  
Purchasers shall not, and agree not to enable third parties to, analyze, copy, reverse engineer or otherwise attempt to determine the structure or sequence of the product.

DATA IMAGES



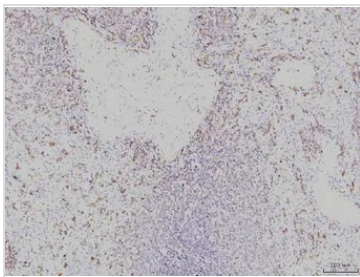
**GTX03669 IHC-P Image**

IHC-P analysis of human placenta tissue using GTX03669 Rab11A antibody [4H9].  
Antigen retrieval : Heat mediated antigen retrieval was performed in EDTA buffer (pH 8.0, epitope retrieval solution)  
Dilution : 2 µg/ml



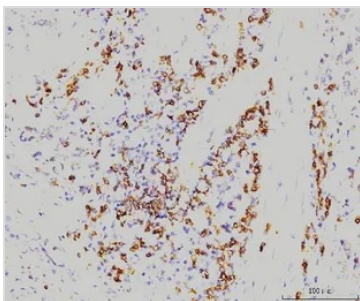
**GTX03669 FCM Image**

FACS analysis of ANA-1 cells using GTX03669 Rab11A antibody [4H9].  
Antibody amount : 1 µg / 1x10<sup>6</sup> cells  
Blue : Primary antibody  
Green : Isotype control  
Red : Unlabelled sample



**GTX03669 IHC-P Image**

IHC-P analysis of human spleen tissue using GTX03669 Rab11A antibody [4H9].  
Antigen retrieval : Heat mediated antigen retrieval was performed in EDTA buffer (pH 8.0, epitope retrieval solution)  
Dilution : 2 µg/ml



**GTX03669 IHC-P Image**

IHC-P analysis of human gastric carcinoma tissue using GTX03669 Rab11A antibody [4H9].  
Antigen retrieval : Heat mediated antigen retrieval was performed in EDTA buffer (pH 8.0, epitope retrieval solution)  
Dilution : 2 µg/ml



For full product information, images and publications, please visit our [website](#).