

## Goat Anti-Mouse IgG antibody (Cy5), pre-adsorbed

**Cat. No. GTX03670**

<b>Host</b>	Goat
<b>Clonality</b>	Polyclonal
<b>Isotype</b>	IgG
<b>Applications</b>	WB, ICC/IF, IHC-P, IHC-Fr, FCM, ELISA, Multiplexing
<b>Reactivity</b>	Mouse

**Package**  
500 µg

## Applications

**Application Note**

\*Optimal dilutions/concentrations should be determined by the researcher.

Suggested dilution	Recommended dilution
WB	Assay dependent
ICC/IF	Assay dependent
IHC-P	Assay dependent
IHC-Fr	Assay dependent
FCM	$\leq 0.1\mu\text{g}/1 \times 10^6$ cells
ELISA	$\leq 1\mu\text{g}$
Multiplexing	Assay dependent

Not tested in other applications.

**Product Note** Reacts with the heavy chains of mouse IgG1, IgG2a, IgG2b, IgG2c, and IgG3. Cross Adsorption with mouse IgM and IgA, human immunoglobulins and pooled sera. May react with immunoglobulins from other species.

## Properties

<b>Form</b>	Liquid
<b>Buffer</b>	PBS
<b>Preservative</b>	< 0.1% sodium azide
<b>Storage</b>	Store as concentrated solution. Centrifuge briefly prior to opening vial. Store at 4°C. Protect from light.
<b>Concentration</b>	1 mg/ml (Please refer to the vial label for the specific concentration.)
<b>Immunogen</b>	Mouse IgG
<b>Purification</b>	Purified by antigen-affinity chromatography From serum
<b>Conjugation</b>	Cyanine5 (Cy5) <a href="#">Wavelength</a>



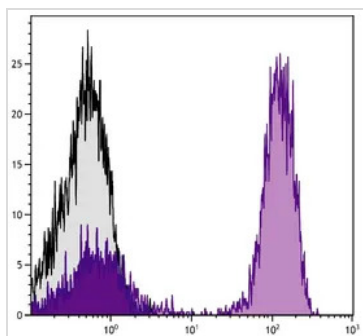
For full product information, images and publications, please visit our [website](#).

For laboratory research use only. Not for any clinical, therapeutic, or diagnostic use in humans or animals. Not for animal or human consumption.

**Note**

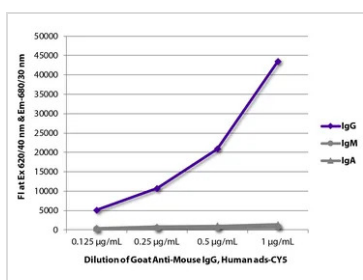
Purchasers shall not, and agree not to enable third parties to, analyze, copy, reverse engineer or otherwise attempt to determine the structure or sequence of the product.

DATA IMAGES



**GTX03670 FCM Image**

FACS analysis of human peripheral blood lymphocytes using Mouse anti-Human CD3 antibody followed by GTX03670 Goat Anti-Mouse IgG antibody (Cy5), pre-adsorbed.



**GTX03670 ELISA Image**

ELISA analysis of purified mouse IgG, IgM, IgA using GTX03670 Goat Anti-Mouse IgG antibody (Cy5), pre-adsorbed.



For full product information, images and publications, please visit our [website](#).