

MMP8 antibody

Cat. No. GTX03673

Host	Rabbit
Clonality	Polyclonal
Isotype	IgG
Applications	WB, IHC-P, ELISA
Reactivity	Mouse, Rat

Package
100 µg

Applications

Application Note

*Optimal dilutions/concentrations should be determined by the researcher.

Suggested dilution	Recommended dilution
WB	0.1-0.5µg/ml
IHC-P	0.5-1µg/m
ELISA	0.1-0.5µg/ml

Note : Antigen retrieval by heat

Not tested in other applications.

Calculated MW 53 kDa. ([Note](#))

Properties

Form	Liquid
Buffer	0.9 mg NaCl, 0.2 mg Na ₂ HPO ₄ , 5mg BSA
Preservative	0.05mg sodium azide
Storage	Store as concentrated solution. Centrifuge briefly prior to opening vial. For short-term storage (1-2 weeks), store at 4°C. For long-term storage, aliquot and store at -20°C or below. Avoid multiple freeze-thaw cycles.
Concentration	0.5 mg/ml (Please refer to the vial label for the specific concentration.)
Immunogen	A synthetic peptide corresponding to a sequence at the N-terminus of mouse MMP-8 (120-157aa HTPQLSRAEVKTAIEKAFHVWSVASPLTFTEILQGEAD), different from the related human sequence by eleven amino acids, and from the related rat sequence by nine amino acids.
Purification	Purified by antigen-affinity chromatography
Conjugation	Unconjugated



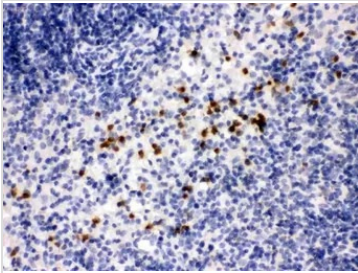
For full product information, images and publications, please visit our [website](#).

For laboratory research use only. Not for any clinical, therapeutic, or diagnostic use in humans or animals. Not for animal or human consumption.

Note

Purchasers shall not, and agree not to enable third parties to, analyze, copy, reverse engineer or otherwise attempt to determine the structure or sequence of the product.

DATA IMAGES

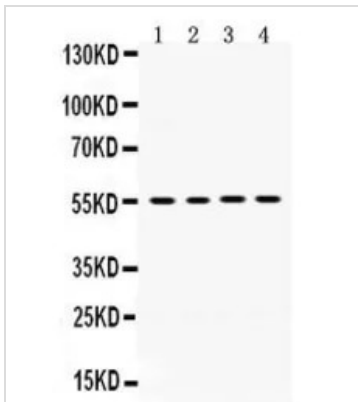


GTx03673 IHC-P Image

IHC-P analysis of mouse spleen tissue using GTx03673 MMP8 antibody.

Antigen retrieval : Heat mediated antigen retrieval was performed in EDTA buffer (pH 8.0, epitope retrieval solution)

Dilution : 1 µg/ml



GTx03673 WB Image

WB analysis of various sample lysates using GTx03673 MMP8 antibody.

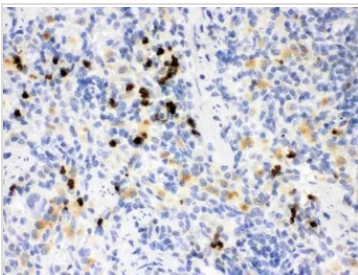
Lane 1 : Mouse testis tissue lysate (50µg)

Lane 2 : NIH3T3 whole cell lysate (40µg)

Lane 3: Hepa whole cell lysate (40µg)

Lane 4 : NRK whole cell lysate (40µg)

Dilution : 0.5 µg/ml



GTx03673 IHC-P Image

IHC-P analysis of rat spleen tissue using GTx03673 MMP8 antibody.

Antigen retrieval : Heat mediated antigen retrieval was performed in EDTA buffer (pH 8.0, epitope retrieval solution)

Dilution : 1 µg/ml



For full product information, images and publications, please visit our [website](https://www.genetex.com).